



State of Rhode Island and Providence Plantations

Juvenile Detention Data 2007

Rhode Island Justice Commission

Thomas Mongeau
Executive Director

Elizabeth Gilheeny
Juvenile Justice Specialist



One Capitol Hill, Providence, RI 02908

Tel (401) 222-2260 Fax (401) 222-1294

www.rijjustice.ri.gov

In 1974, the United States Congress enacted the Juvenile Justice and Delinquency Prevention Act (the Act)¹. In 2002, Congress reauthorized the Act. The purpose of the Act is to provide a coordinated and comprehensive approach to the problems of juvenile delinquency. Section 223 of the Act addresses the requirements which states must meet in order to receive formula grants from the federal government. Pursuant to Rhode Island General Laws §42-26-4 the specifics of the Act and the administration of juvenile justice funding is carried out by the Rhode Island Justice Commission (RIJC) and specifically by the Juvenile Justice Specialist.

The Act requires that states adhere to certain "core requirements" when apprehending and detaining juveniles and that a record is maintained of the nature of detentions and characteristics of juveniles detained. All law enforcement agencies in Rhode Island are required to maintain this information through a self-reporting system on a Juvenile Detention Data Summary Form². These reports are forwarded to the RIJC on a monthly basis, and the Juvenile Justice Specialist uses the information to submit a yearly *summary report* to the federal Office of Juvenile Justice and Delinquency Prevention.

Please note that these reports focus on juveniles securely and non-securely detained. Other juveniles may have been released at the scene, transported home, brought directly to the RI Training School or to Court. Also note that only the most serious offense for which the youth was detained is recorded. Accordingly, these numbers may differ from other statistics such as court petition data, etc.

In order to further utilize the data submitted to the RIJC a relational database was created. With this analysis tool, it is possible to examine the dynamics of juvenile offenses in much greater detail. We can examine offenses statewide, within cities and towns or among cities and towns by age, gender, racial/ethnic background, time of day, day of week or month. Our aim in this project is to provide practitioners and policy makers with statistical information that will allow their decision-making processes to be more informed.

Data can also be accessed at <http://www.rijustice.state.ri.us/sac/statistics.htm>.

Thomas H. Mongeau
Executive Director

Elizabeth Gilheeny
Juvenile Justice Specialist

¹ 42 U.S.C.5601 et seq.

² Appendix 1

Acknowledgements

Along with the efforts of the **Juvenile Justice Specialist** and in collaboration with the **Statistical Analysis Center**, this report was made possible with assistance from the following:

- **Gina Tocco, Grant Administration Assistant, RI Justice Commission.** Gina is the RI Justice Commission staff person designated to oversee the collection and data entry of Juvenile Detention Data Summary Sheets submitted by law enforcement agencies. She also performs the data analysis and the compilation of this report.
- **HomeKey, Inc., 2348 Post Road, Warwick, RI.** The Access database and website used to compile and analyze the detention data is supported with technical assistance from HomeKey, Inc.
- **Juvenile Data Providers.** A listing by law enforcement agency can be found on the next page.

Juvenile Data Providers

Barrington Police Department, Det. Sgt. Dino DeCrescenzo, Det. Josh Birrell, 437-3930
& Det. Clerk Courtney Miles, 437-3935

Bristol Police Department, Det. Robert DeFusco, 253-6900

Burrillville Police Department, Lt. John R. Connors, 568-6255

Central Falls Police Department, Det. Dan Barzykowski, 727-7415, Joyce Tager,
& Elaine Carey 727-7415

Charlestown Police Department, Det. Gary Serra, 364-1212

Coventry Police Department, Det. Vigeant, 826-1100

Cranston Police Department, Det. Sgt. Edward Walsh, 477-5037

Cumberland Police Department, Det. Michael P. Strain, 333-2500

East Greenwich Police Department, Lt. Thomas Joyce, 884-2244

East Providence Police Department, Det. Charles Alexyon & Det. Mark Jones, 435-7642

Foster Police Department, Sgt. Samuel Mooney, 397-3317

Glocester Police Department, Capt. David LaPlante & Matthew Floor, 568-2533

Hopkinton Police Department, Det. Christopher Lyman, 377-7750

Jamestown Police Department, Det. Sgt. Frank T. Watson, 423-1212

Johnston Police Department, Det. Richard Almonte, 231-4210

Lincoln Police Department, Det. Kenneth Smith, 333-1111

Little Compton Police Department, Ptlm. John Harris, 635-2311

Middletown Police Department, Det. Abel Fernandes, 418-0539

Narragansett Police Department, Ptlm. Randall Shields, 789-1091

New Shoreham Police Department, Sgt. Stephen Cahill, 466-3220

Newport Police Department, Det. Patrick Shea, 847-1306

North Kingstown Police Department, Det. Jason Clark, 294-3318

North Providence Police Department, Capt. Robert Lough, 231-4533

North Smithfield Police Department, Insp. Sharon Pagliarini, 762-1212

Pawtucket Police Department, Det. Sgt. Roberto DaSilva, 727-9100 x740

Portsmouth Police Department, Det. Sgt. Anthony Cambrola, 643-0109

Providence Police Department, Capt. Keith Tucker, 272-3121

Rhode Island State Police, Linda Fraccola, 333-1121

Richmond Police Department, Theresa Allen, 539-8289

Scituate Police Department, Sgt. David Goolgasian, 821-5900

Smithfield Police Department, Sgt. Lisa St. Angelo, 233-1036

South Kingstown Police Department, Det. Tony Balbi, 783-3166

Tiverton Police Department, Lt. Patrick Jones, Tom Wood, & Christine Miguel, 625-6717

Warren Police Department, Det. David Annunziata, 245-1311

Warwick Police Department, Ptlm. John Henry, 468-4321

West Greenwich Police Department, Thomas Duquette, 397-7191

West Warwick Police Department, Det. Sgt. Fernando Araujo, 822-9299

Westerly Police Department, Ptlm. David Turano, 348-6132

Woonsocket Police Department, Sgt. Robert Moreau, 766-1212

University of Rhode Island, Police & Security Department, Maj. Steve Baker &
Lt. Ken Olsen, 874-4141

Brown University, Department of Public Safety, Lt. Kevin O'Connor, &
Patricia Salvo, 863-3143

RI Airport Police Department, Insp. Joseph Ottaviano, 737-7789

Table of Contents

2007 State Totals and Analyses	Page
Categories of Offenses	1
Month of the Year	2
Time of Day	3
School Hours	4
Violation Type	5
Age	6
Race/Ethnicity	7
Sex	8
2007 Specific Offenses and Analyses	9
2007 Reporting Agencies	
Barrington Police Department	13
Bristol Police Department	15
Brown University, Department of Public Safety	17
Burrillville Police Department	19
Central Falls Police Department	21
Charlestown Police Department	23
Coventry Police Department	25
Cranston Police Department	27
Cumberland Police Department	29
East Greenwich Police Department	31
East Providence Police Department	33
Foster Police Department	35
Glocester Police Department	37
Hopkinton Police Department	39
Jamestown Police Department	41
Johnston Police Department	43
Lincoln Police Department	45
Little Compton Police Department	47
Middletown Police Department	49
Narragansett Police Department	51

2007 Reporting Agencies (cont.)	Page
New Shoreham Police Department.....	53
Newport Police Department.....	55
North Kingstown Police Department.....	57
North Providence Police Department	59
North Smithfield Police Department	61
Pawtucket Police Department	63
Portsmouth Police Department	65
Providence Police Department.....	67
Rhode Island Airport Police Department.....	69
Richmond Police Department	71
Scituate Police Department.....	73
Smithfield Police Department.....	75
South Kingstown Police Department.....	77
State Police Chepachet.....	79
State Police Headquarters	81
State Police Hope Valley	83
State Police Lincoln	85
State Police Portsmouth	87
State Police Wickford	89
Tiverton Police Department.....	91
University of Rhode Island Public Safety.....	93
Warren Police Department.....	95
Warwick Police Department	97
West Greenwich Police Department.....	99
West Warwick Police Department.....	101
Westerly Police Department	103
Woonsocket Police Department.....	105

2000 Census Under 18 Population Statistics	107
---------------------------------------------------------	------------

Appendix

Appendix – Juvenile Detention Data Summary Form.....	109
------------------------------------------------------	-----

Section 1

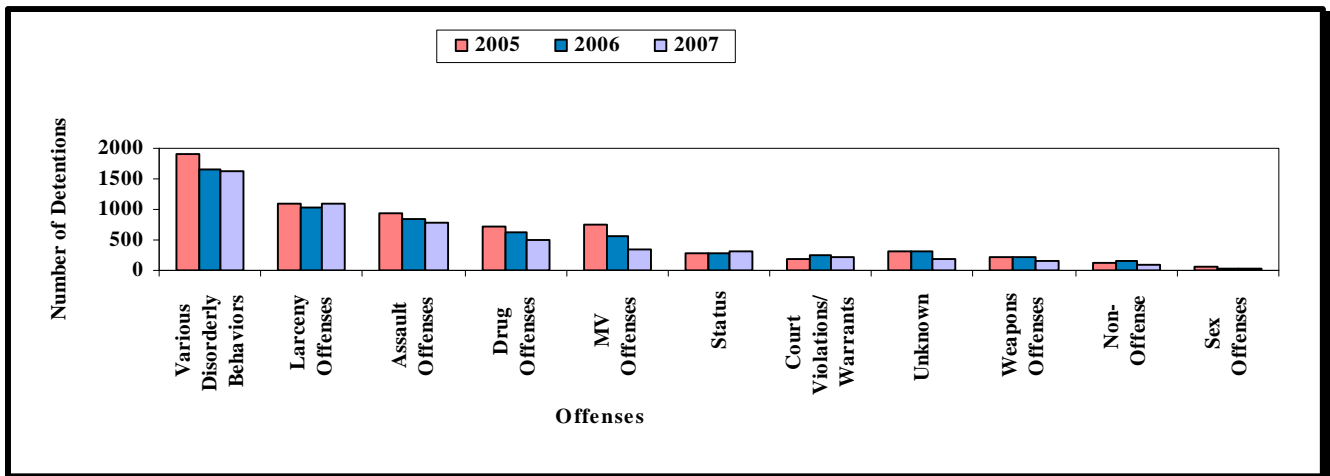
2007 State Totals and Analyses

CATEGORIES OF OFFENSES

Juvenile detentions of youth **decreased** in total by 10% in 2007 over 2006. The largest category of offenses, **various disorderly behaviors**, represented 30% of all offenses for which youth were detained and had a slight 2% decrease in 2007. Larceny offenses represented the second largest figure at 20% of all detentions. Assault offenses represent the third highest category of offenses with 15% of all detentions. This was an 8% decrease from 2006.

All but two categories of offenses in 2007 experienced declines in their totals. Other noteworthy decreases for 2007 were in the categories of detentions for drug, motor vehicle, weapons and sex offenses.

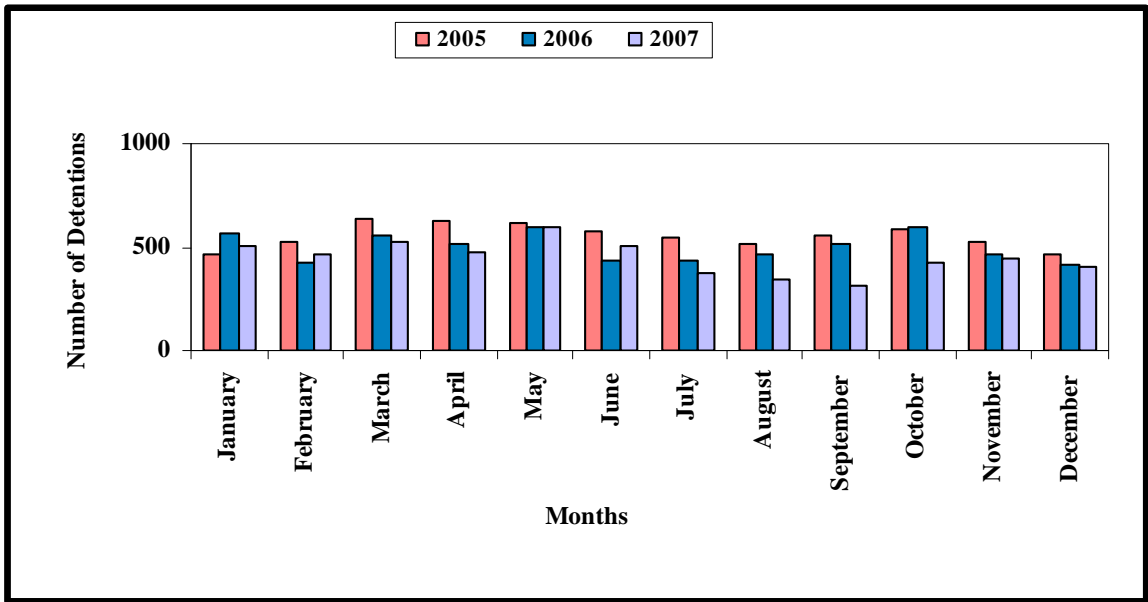
Category	2005	2006	2007	% of 2007	% Chg 2006-2007
Various Disorderly Behaviors	1900	1658	1621	30%	-2%
Larceny Offenses	1105	1039	1100	20%	6%
Assault Offenses	940	856	786	15%	-8%
Drug Offenses	723	631	494	9%	-22%
MV Offenses	742	553	353	7%	-36%
Status	287	269	325	6%	21%
Court Violations/ Warrants	197	254	226	4%	-11%
Unknown	313	308	197	4%	-36%
Weapons Offenses	230	213	144	3%	-32%
Non-Offense	119	157	107	2%	-32%
Sex Offenses	50	41	29	1%	-29%
Totals	6606	5979	5382	100%	-10%



MONTH OF YEAR

The Month of the Year categories all experienced decreases in 2007 except for February and June. June had the largest increase of 17% from 2006 to 2007. The largest decrease was in September, that of 38%. Also, noteworthy were the large decreases during the months of July, August and October.

Month	2005	2006	2007	% of 2007	% Chg 2006-2007
January	461	561	506	9%	-10%
February	524	427	462	9%	8%
March	633	551	525	10%	-5%
April	623	511	477	9%	-7%
May	614	594	593	11%	0%
June	572	435	507	9%	17%
July	542	438	371	7%	-15%
August	514	467	346	6%	-26%
September	556	513	318	6%	-38%
October	581	600	429	8%	-29%
November	522	467	448	8%	-4%
December	464	415	400	7%	-4%
Totals	6606	5979	5382	100%	-10%

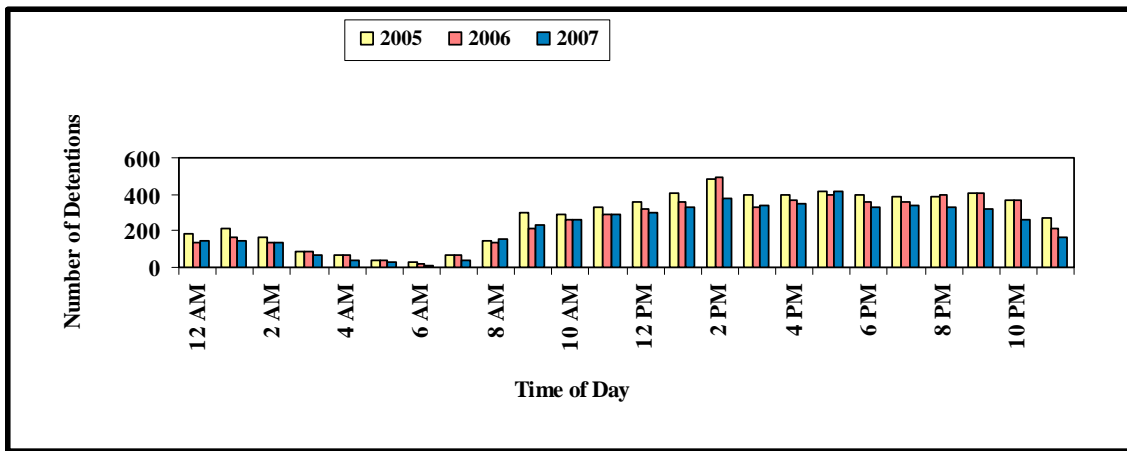


TIME OF DAY

During 2007 with little exception detentions start at 8 AM and continue to increase throughout the day until beginning to decrease around 8 PM. The numbers are very similar to those from prior years.

From 2006 to 2007 there were many noteworthy differences. Most early morning detentions decreased sharply. Only 12 AM saw an increase of 6%. Although the total number in many of these hourly increments is small, thus making any decrease contribute to a large percentage decrease; the seriousness of a detention occurring during these hours should be emphasized.

Time of Day	2005	2006	2007	% of 2007	% Chg 2006-2007
12 AM	185	136	144	3%	6%
1 AM	217	165	145	3%	-12%
2 AM	169	131	132	2%	1%
3 AM	90	83	71	1%	-14%
4 AM	66	71	38	1%	-46%
5 AM	35	35	26	0%	-26%
6 AM	31	24	13	0%	-46%
7 AM	68	63	35	1%	-44%
8 AM	148	135	151	3%	12%
9 AM	297	211	235	4%	11%
10 AM	290	266	262	5%	-2%
11 AM	328	292	289	5%	-1%
12 PM	357	318	302	6%	-5%
1 PM	409	355	326	6%	-8%
2 PM	484	495	374	7%	-24%
3 PM	398	328	342	6%	4%
4 PM	395	371	347	6%	-6%
5 PM	418	396	414	8%	5%
6 PM	397	360	330	6%	-8%
7 PM	384	358	337	6%	-6%
8 PM	387	400	328	6%	-18%
9 PM	409	404	319	6%	-21%
10 PM	372	372	257	5%	-31%
11 PM	269	210	163	3%	-22%
Totals	6603	5979	5380	100%	-10%



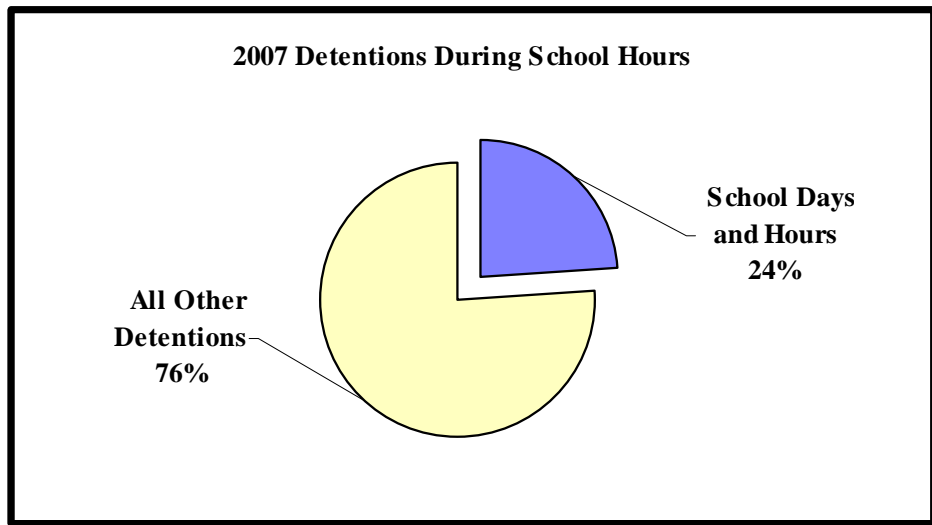
SCHOOL HOURS

The following numbers and representation are an attempt to show detentions that occurred when most schools were in session. Weekends, holidays, summer months and most common vacation days were excluded.

Month	Detentions between 8AM and 2PM
January	155
February	99
March	172
April	95
May	153
June *	73
August **	7
September	96
October	143
November	153
December	135
Total	1281

* Through end of school year

** First few days of school year



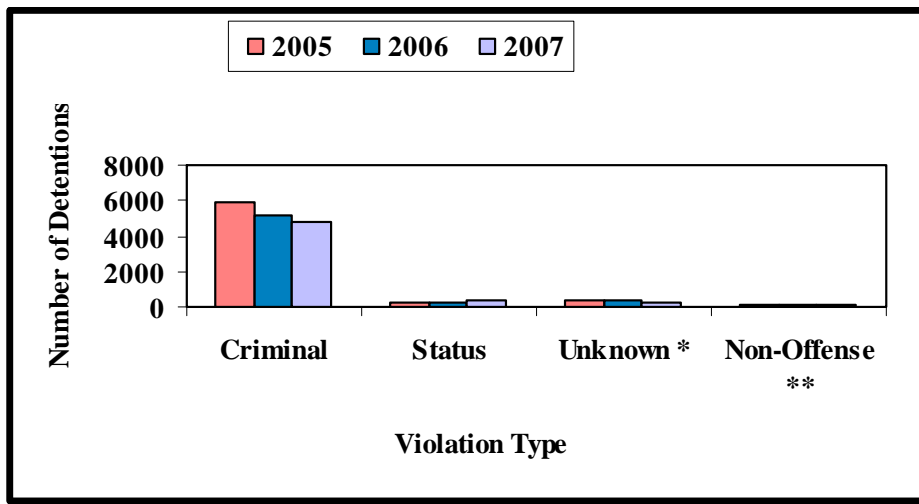
VIOLATION TYPE

The vast majority of detentions are for criminal offenses, 88% in 2007. However, there was a 9% decrease in the number of criminal offenses reported from 2006 to 2007. There continues to be a fairly high number of unknowns due to increased investigations and protective custody incidents reported. The increase in non-offenses is due to the inclusion of jaywalking and refusing breathalyzer incidents as well as missing persons.

Violation Type	2005	2006	2007	% of 2007	% Chg 2006-2007
Criminal	5878	5225	4746	88%	-9%
Status	296	289	332	6%	15%
Unknown *	313	308	197	4%	-36%
Non-Offense **	119	157	107	2%	-32%
Totals	6606	5979	5382	100%	-10%

* This violation type includes offenses listed as Protective Custody, Suspicious Person, Investigation, With Offender, No Charge or if no offense was given.

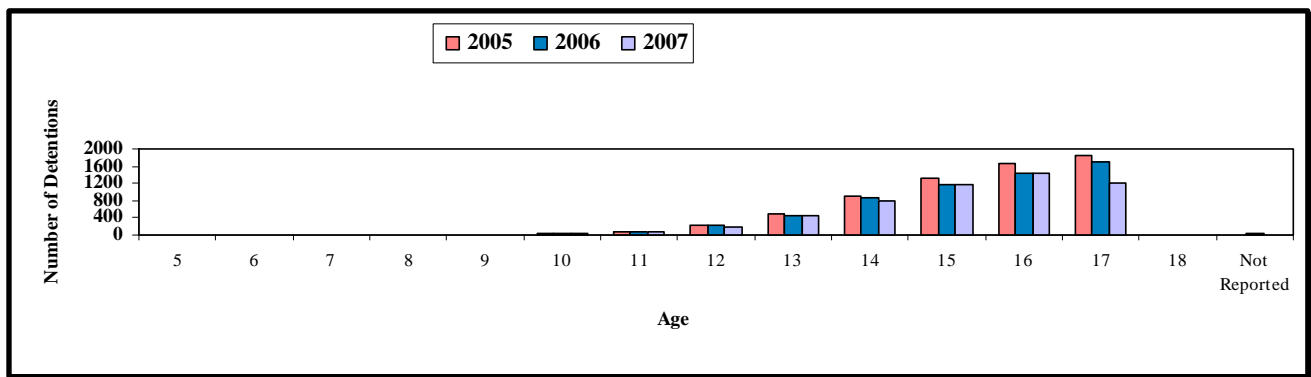
** The non-offense violation type includes offenses listed as Missing Persons, Jaywalking, and Refusing Breathalyzer.



AGE

The vast majority of detentions in 2007 continued to be of youths in the age brackets 14 – 17. Comparing the change from 2006 to 2007, the majority of the age groups experienced a decrease. When each category is examined individually it is noted that the older age categories remained constant or decreased in small percentages, with the exception of 17 year olds with a 30% decrease. The younger age categories generally consist of juveniles brought in with an older offender or for protective custody.

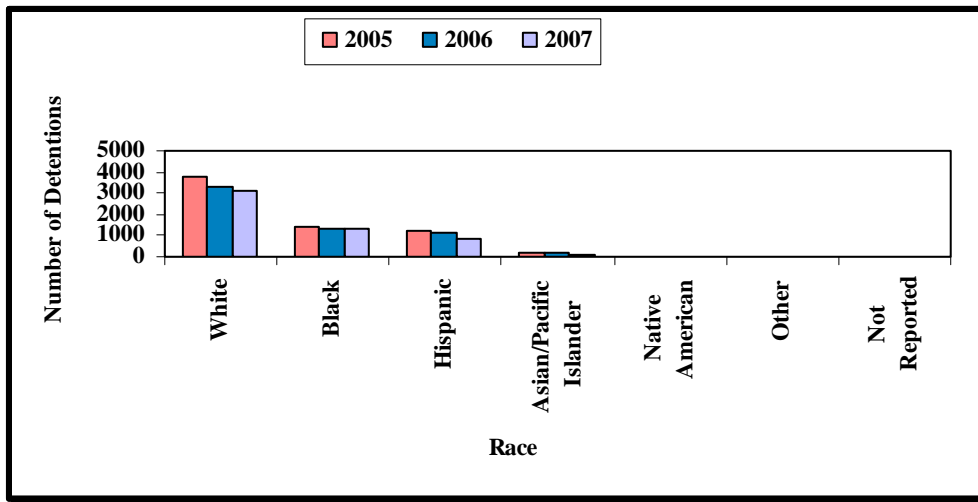
Age	2005	2006	2007	% of 2007	% Chg 2006-2007
5	0	2	0	0%	-100%
6	0	1	2	0%	100%
7	3	1	2	0%	100%
8	6	2	9	0%	350%
9	14	18	14	0%	-22%
10	34	26	21	0%	-19%
11	88	81	72	1%	-11%
12	219	219	204	4%	-7%
13	504	456	443	8%	-3%
14	898	854	801	15%	-6%
15	1330	1174	1182	22%	1%
16	1664	1423	1427	27%	0%
17	1834	1701	1192	22%	-30%
18	6	2	4	0%	100%
Not Reported	6	19	9	0%	217%
Totals	6606	5979	5382	100%	-10%



RACE/ETHNICITY

With respect to Race and Ethnicity demographics 6% less White, 6% less Black, 17% less Asian and 26% less Hispanic youth were detained in 2007. The latter is significant in that there had been a smaller 7% decrease in 2006 but increases in the number of Hispanic youth detained in prior years. The percentage of Native Americans detained increased from 2006 to 2007 after having had a decrease from 2005 to 2006.

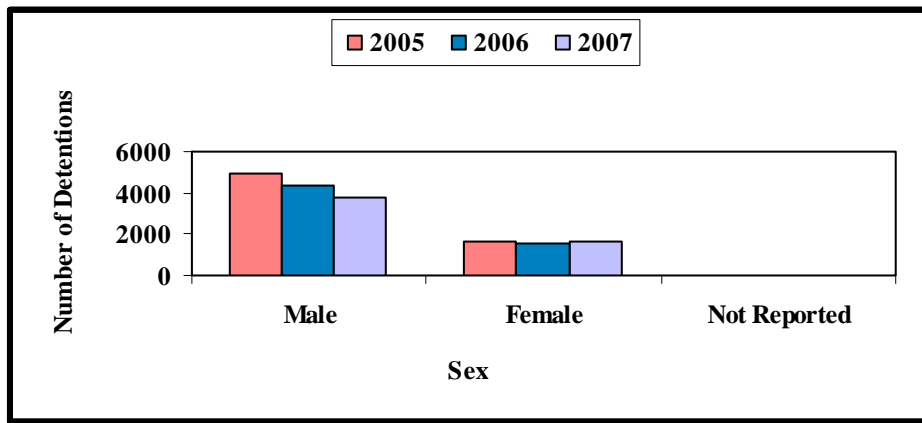
Race	2005	2006	2007	% of 2007	% Chg 2006-2007
White	3789	3318	3124	58%	-6%
Black	1412	1350	1276	24%	-5%
Hispanic	1205	1126	832	15%	-26%
Asian/Pacific Islander	158	145	120	2%	-17%
Native American	14	8	17	0%	113%
Other	8	16	7	0%	-56%
Not Reported	20	16	6	0%	-63%
Totals	6606	5979	5382	100%	-10%



SEX

Males continued to be detained in far greater numbers than females in 2007. Overall, males represented 70 % of all youth detained as compared to 30% of females detained. This represented a 15% decrease in the male number for the year and a 4% increase for females.

Sex	2005	2006	2007	% of 2007	% Chg 2006-2007
Male	4914	4401	3744	70%	-15%
Female	1676	1560	1622	30%	4%
Not Reported	16	18	16	0%	-11%
Totals	6606	5979	5382	100%	-10%



Section 2

2007 Specific Offenses and Analyses

SPECIFIC OFFENSES

Offenses	2005	2006	2007	Change 2006 to 2007	% Change 2006 to 2007
Various Disorderly Behaviors					
Disorderly Conduct	955	865	995	130	15%
Vandalism	215	198	178	-20	-10%
Malicious damage	185	182	120	-62	-34%
Trespassing	170	146	88	-58	-40%
Obstructing Police	47	46	41	-5	-11%
Loitering	20	20	28	8	40%
Malicious Mischief	20	13	22	9	69%
Arson - 6th Degree	3	5	17	12	240%
Escapee	43	34	15	-19	-56%
Arson	31	13	15	2	15%
Conspiracy	21	14	12	-2	-14%
Crank/Obs Phone Calls	16	8	10	2	25%
Resisting Arrest	13	7	10	3	43%
Poss Fireworks	8	3	8	5	167%
Drunkenness	9	20	7	-13	-65%
False Fire Alarm	4	17	7	-10	-59%
Possession of Spray Paint	3	5	7	2	40%
Throwing Objects at Vehicles	5	10	6	-4	-40%
False 911 Call	3	8	6	-2	-25%
Bomb Threat	5	4	6	2	50%
Graffiti	1	3	5	2	67%
Arson - 2nd degree	7	1	4	3	300%
Noise Disturbance	19	22	3	-19	-86%
Arson - 4th Degree	5	1	3	2	200%
Arson - 5th Degree	4	1	3	2	200%
Family Offenses (unknown specific)	9	2	2	0	0%
Filing false report	3	1	2	1	100%
Escape RITSY	6	0	1	1	100%
Cruelty to Animals	2	5	0	-5	-100%
False ID	2	2	0	-2	-100%
Transporting Alc/Minor	4	1	0	-1	-100%
Aid & Abet	3	1	0	-1	-100%
7th Degree Arson	13	0	0	0	0%
Public Drinking	3	0	0	0	0%
Arson - 3rd Degree	0	0	0	0	0%
Urinating in Public	0	0	0	0	0%
Total Various Disorderly Behaviors	1857	1658	1621	-37	-2%

Offenses	2005	2006	2007	Change 2006 to 2007	% Change 2006 to 2007
Larceny Offenses					
Shoplifting	474	453	627	174	38%
Breaking & Entry	232	243	199	-44	-18%
Larceny	268	223	185	-38	-17%
Poss/Rec stolen Goods	69	66	52	-14	-21%
Attempted B&E	15	15	16	1	7%
Fraud	9	2	5	3	150%
Attempted larceny	15	16	4	-12	-75%
Poss Burglary Tools	3	0	4	4	100%
Counterfeiting/Passing Counterfeit Instrument	11	12	3	-9	-75%
Embezzlement	2	5	2	-3	-60%
Fraud. Use of Credit Cards	2	2	1	-1	-50%
Check/Forgery	1	1	1	0	0%
OMUFP- Obtaining \$ under false pretenses	1	1	1	0	0%
Burglary	3	0	0	0	0%
Total Larceny Offenses	1105	1039	1100	61	6%
Assault Offenses					
Simple Assault	495	475	453	-22	-5%
Robbery	96	118	106	-12	-10%
Assault	138	107	79	-28	-26%
Felony Assault	61	41	65	24	59%
Assault w/Dang Weapon	72	51	27	-24	-47%
Assault on a Police Officer	17	11	17	6	55%
Domestic Assault	27	19	13	-6	-32%
Attempted Robbery	0	0	7	7	100%
Assault on a School teacher	3	3	5	2	67%
Strong Arm Robbery	6	13	4	-9	-69%
Threats	12	4	4	0	0%
Fighting	5	8	2	-6	-75%
Intimidating Witness	0	2	2	0	0%
Cyberstalking	3	2	1	-1	-50%
Kidnapping	0	0	1	1	100%
Attempted Murder	0	2	0	-2	-100%
Carjacking	2	0	0	0	0%
Harassment	2	0	0	0	0%
Murder	1	0	0	0	0%
Extortion	0	0	0	0	0%
Total Assault Offenses	940	856	786	-70	-8%

Offenses	2005	2006	2007	Change 2006 to 2007	% Change 2006 to 2007
MV Offenses					
Driving w/o License	311	235	172	-63	-27%
Poss Stol. MV	244	173	88	-85	-49%
Driving under Influence/Driving while Intox.	24	25	22	-3	-12%
Driving w/ Suspended License	40	35	15	-20	-57%
Reckless Driving	24	18	11	-7	-39%
Tampering w/MV	21	16	9	-7	-44%
Motor Vehicle Charges	21	12	8	-4	-33%
Operating MV w/o Consent	21	14	7	-7	-50%
Dr w/o Consent Owner	19	9	6	-3	-33%
Eluding	5	1	6	5	500%
Lv Scene Accident/Personal Injury	7	10	3	-7	-70%
Dr/ to endanger death resulting	0	0	2	2	100%
Lv Scene Accident/Property Damage	5	4	1	-3	-75%
Failure to Report an Accident	0	1	1	0	0%
Dr/to endanger personal injury resulting	0	0	1	1	100%
Traffic Violations	0	0	1	1	100%
Dr/ to endanger	0	0	0	0	0%
Total MV Offenses	742	553	353	-200	-36%
Drug Offenses					
Poss Marijuana	536	447	351	-96	-21%
Poss unspecified narcotics	89	94	117	23	24%
Poss Cocaine	52	52	12	-40	-77%
Mfg/Del Unspecified Drug	12	7	5	-2	-29%
Mfg/Del Marijuana	10	3	4	1	33%
Poss w/int deliver unspecified	10	16	3	-13	-81%
Mfg/Del Cocaine	11	10	2	-8	-80%
Poss Heroin	3	2	0	-2	-100%
Mfg/Del Heroin	0	0	0	0	0%
Poss N & S	0	0	0	0	0%
Total Drug Offenses	723	631	494	-137	-22%
Court Violations/Warrants					
Warrant/Fugitive	154	217	174	-43	-20%
Violation of court Order	24	22	37	15	68%
Viol of Home conf	19	15	15	0	0%
Total Court Violations/Warrants	197	254	226	-28	-11%

Offenses		2005	2006	2007	Change 2006 to 2007	% Change 2006 to 2007
Status						
	Poss Alc/Minor	141	115	161	46	40%
	Violation of Curfew (location)	43	29	58	29	100%
	Runaway	77	77	56	-21	-27%
	Wayward/Disobedient Child	53	42	40	-2	-5%
	Truancy	12	5	8	3	60%
	Tobacco Related Offense	4	1	2	1	100%
	Total Status	330	269	325	56	21%
Unknown						
	Investigation	141	142	89	-53	-37%
	Protective Custody	102	65	45	-20	-31%
	No Charge	10	28	29	1	4%
	Susp. Person	16	9	16	7	78%
	W/Offender	33	38	9	-29	-76%
	Unknown	11	26	9	-17	-65%
	Total Unknown	313	308	197	-111	-36%
Non-Offense						
	Missing Person	119	128	102	-26	-20%
	Refusing Breathalyzer	0	3	4	1	33%
	Jaywalking	0	26	1	-25	-96%
	Total Non-Offense	119	157	107	-50	-32%
Weapons Offenses						
	Poss. Unspecified Weapon	69	77	47	-30	-39%
	Poss Firearm	54	35	44	9	26%
	Poss Knife	33	42	27	-15	-36%
	Possession Weapon/School	27	25	11	-14	-56%
	Poss BB Gun	20	19	9	-10	-53%
	Discharging a firearm	15	10	4	-6	-60%
	Possession of ammunition	1	2	1	-1	-50%
	Possession of a Dangerous Weapon	3	0	1	1	100%
	Carrying a concealed weapon	6	3	0	-3	-100%
	Discharging a BB Gun	2	0	0	0	0%
	Total Weapons Offenses	230	213	144	-69	-32%
Sex Offenses						
	Sexual Assault	28	18	12	-6	-33%
	1st Degree Child Molestation	8	12	11	-1	-8%
	2nd Degree Child Molestation	10	8	3	-5	-63%
	Child Molestation/Unspecified	4	3	3	0	0%
	Indecent Exposure	0	0	0	0	0%
	Enticement of Children	0	0	0	0	0%
	Total Sex Offenses	50	41	29	-12	-29%
Total Statewide by Offense		6606	5979	5382	-597	-10%

Section 3

2007 Reporting Agencies

Juvenile Detentions-

Assault Offenses

Simple Assault	4	6.9%
Sum	4	6.9%

Court Violations/Warrants

Violation of court Order	3	5.2%
Warrant/Fugitive	3	5.2%
Sum	6	10.3%

Drug Offenses

Poss Marijuana	9	15.5%
Sum	9	15.5%

Larceny Offenses

Larceny	5	8.6%
Breaking & Entry	4	6.9%
Shoplifting	1	1.7%
Sum	10	17.2%

MV Offenses

Dr/to endanger death resulting	1	1.7%
Driving w/ Suspended License	1	1.7%
Sum	2	3.4%

Status

Poss Alc/Minor	11	19.0%
Wayward/Disobedient Child	3	5.2%
Sum	14	24.1%

Various Disorderly Behaviors

Vandalism	9	15.5%
Arson	1	1.7%
Bomb Threat	1	1.7%
Disorderly Conduct	1	1.7%
False Fire/Police Alarm	1	1.7%
Sum	13	22.4%

Barrington

Beginning Date: 1/1/2007

Ending Date: 12/31/2007

Offenses Summary

Status	14	24.1%
Various Disorderly Behaviors	13	22.4%
Larceny Offenses	10	17.2%
Drug Offenses	9	15.5%
Court Violations/Warrants	6	10.3%
Assault Offenses	4	6.9%
MV Offenses	2	3.4%
Sum	58	100.0%

Ages

12	1	1.7%
13	2	3.4%
14	2	3.4%
15	12	20.7%
16	17	29.3%
17	22	37.9%
18	2	3.4%
Sum	58	100.0%

Time Information

1 AM	1	1.7%	7 PM	9	15.5%
7 AM	1	1.7%	8 PM	1	1.7%
8 AM	2	3.4%	10 PM	1	1.7%
9 AM	3	5.2%	11 PM	4	6.9%
10 AM	3	5.2%	Sum	58	100.0%
11 AM	4	6.9%			
12 PM	2	3.4%			
1 PM	2	3.4%			
2 PM	4	6.9%			
3 PM	3	5.2%			
4 PM	5	8.6%			
5 PM	4	6.9%			
6 PM	9	15.5%			

Month Information

January	6	10.3%	August	3	5.2%
February	8	13.8%	September	1	1.7%
March	4	6.9%	November	1	1.7%
April	5	8.6%	Sum	58	100.0%
May	11	19.0%			
June	5	8.6%			
July	14	24.1%			

Types of Offenses

Criminal	44	75.9%
Status	14	24.1%
Sum	58	100.0%

Area of Detention

Non Secure Area	58	100.0%
Sum	58	100.0%

Race

White	55	94.8%
Black	3	5.2%
Sum	58	100.0%

Count of Sex

M	51	87.93%
F	7	12.07%
Sum	58	100.00%

Juvenile Detentions-

Assault Offenses

Simple Assault	2	4.5%
Assault on a Police Officer	2	4.5%
Felony Assault	1	2.3%
Sum	5	11.4%

Court Violations/Warrants

Warrant/Fugitive	2	4.5%
Sum	2	4.5%

Drug Offenses

Poss Marijuana	10	22.7%
Sum	10	22.7%

Larceny Offenses

Poss/Rec stolen Goods	5	11.4%
Shoplifting	4	9.1%
Larceny	3	6.8%
Breaking & Entry	3	6.8%
Sum	15	34.1%

MV Offenses

Dr/to endanger death resulting	1	2.3%
Driving w/ Suspended License	1	2.3%
Dr w/o Consent Owner	1	2.3%
Sum	3	6.8%

Status

Poss Alc/Minor	1	2.3%
Sum	1	2.3%

Various Disorderly Behaviors

Disorderly Conduct	4	9.1%
False 911 Call	2	4.5%
Arson - 4th Degree	1	2.3%
Sum	7	15.9%

Weapons Offenses

Poss Firearm	1	2.3%
Sum	1	2.3%

Bristol

Beginning Date: 1/1/2007

Ending Date: 12/31/2007

Offenses Summary

Larceny Offenses	15	34.1%
Drug Offenses	10	22.7%
Various Disorderly Behaviors	7	15.9%
Assault Offenses	5	11.4%
MV Offenses	3	6.8%
Court Violations/Warrants	2	4.5%
Weapons Offenses	1	2.3%
Status	1	2.3%
Sum	44	100.0%

Ages

12	1	2.3%
13	3	6.8%
14	7	15.9%
15	15	34.1%
16	11	25.0%
17	7	15.9%
Sum	44	100.0%

Time Information

12 AM	1	2.3%	8 PM	5	11.4%
2 AM	1	2.3%	9 PM	6	13.6%
4 AM	3	6.8%	10 PM	1	2.3%
8 AM	3	6.8%	Sum	44	100.0%
9 AM	1	2.3%			
10 AM	4	9.1%			
12 PM	3	6.8%			
1 PM	2	4.5%			
2 PM	4	9.1%			
4 PM	2	4.5%			
5 PM	4	9.1%			
6 PM	1	2.3%			
7 PM	3	6.8%			

Month Information

January	1	2.3%	August	2	4.5%
February	3	6.8%	September	3	6.8%
March	2	4.5%	October	1	2.3%
April	6	13.6%	November	11	25.0%
May	1	2.3%	December	7	15.9%
June	2	4.5%	Sum	44	100.0%
July	5	11.4%			

Types of Offenses

Criminal	43	97.7%
Status	1	2.3%
Sum	44	100.0%

Area of Detention

Non Secure Area	35	79.5%
Secure Cell/Room	9	20.5%
Sum	44	100.0%

Race

White	42	95.5%
Black	2	4.5%
Sum	44	100.0%

Count of Sex

M	33	75.00%
F	11	25.00%
Sum	44	100.00%

Juvenile Detentions-

There were no juveniles detained by the Brown University, Department of Public Safety in 2007.

Burrillville

Beginning Date: 1/1/2007

Ending Date: 12/31/2007

Juvenile Detentions-

Assault Offenses

Simple Assault	4	10.3%
Sum	4	10.3%

Court Violations/Warrants

Violation of court Order	1	2.6%
Sum	1	2.6%

Drug Offenses

Poss Marijuana	6	15.4%
Sum	6	15.4%

Larceny Offenses

Larceny	3	7.7%
Sum	3	7.7%

MV Offenses

Driving w/o License	2	5.1%
Sum	2	5.1%

Status

Runaway	8	20.5%
Poss Alc/Minor	5	12.8%
Wayward/Disobedient Child	1	2.6%
Sum	14	35.9%

Unknown

Susp. Person	1	2.6%
Unknown	1	2.6%
Sum	2	5.1%

Various Disorderly Behaviors

Disorderly Conduct	4	10.3%
Arson - 6th Degree	2	5.1%
Noise Disturbance	1	2.6%
Sum	7	17.9%

Burrillville

Beginning Date: 1/1/2007

Ending Date: 12/31/2007

Offenses Summary

Status	14	35.9%
Various Disorderly Behaviors	7	17.9%
Drug Offenses	6	15.4%
Assault Offenses	4	10.3%
Larceny Offenses	3	7.7%
Unknown	2	5.1%
MV Offenses	2	5.1%
Court Violations/Warrants	1	2.6%
Sum	39	100.0%

Ages

11	2	5.1%
12	1	2.6%
13	1	2.6%
14	6	15.4%
15	13	33.3%
16	10	25.6%
17	6	15.4%
Sum	39	100.0%

Time Information

12 AM	2	5.1%	9 PM	3	7.7%
1 AM	5	12.8%	11 PM	3	7.7%
2 AM	7	17.9%	Sum	39	100.0%
8 AM	1	2.6%			
10 AM	2	5.1%			
11 AM	1	2.6%			
12 PM	1	2.6%			
1 PM	1	2.6%			
3 PM	1	2.6%			
4 PM	1	2.6%			
5 PM	3	7.7%			
6 PM	4	10.3%			
7 PM	4	10.3%			

Month Information

January	2	5.1%	October	3	7.7%
March	2	5.1%	November	3	7.7%
April	8	20.5%	December	1	2.6%
May	5	12.8%	Sum	39	100.0%
June	5	12.8%			
July	5	12.8%			
August	5	12.8%			

Types of Offenses

Criminal	23	59.0%
Status	14	35.9%
Unknown	2	5.1%
Sum	39	100.0%

Area of Detention

Non Secure Area	21	53.8%
Secure Cell/Room	18	46.2%
Sum	39	100.0%

Race

White	38	97.4%
Hispanic	1	2.6%
Sum	39	100.0%

Count of Sex

F	20	51.28%
M	18	46.15%
Not Reported	1	2.56%
Sum	39	100.00%

Central Falls

Beginning Date: 1/1/2007

Ending Date: 12/31/2007

Juvenile Detentions-

Assault Offenses

Simple Assault	14	8.6%
Felony Assault	4	2.5%
Robbery	4	2.5%
Assault on a Police Officer	1	0.6%
Sum	23	14.2%

Court Violations/Warrants

Warrant/Fugitive	6	3.7%
Violation of court Order	1	0.6%
Sum	7	4.3%

Drug Offenses

Poss Marijuana	6	3.7%
Poss unspecified narcotics	3	1.9%
Sum	9	5.6%

Larceny Offenses

Breaking & Entry	4	2.5%
Larceny	3	1.9%
Poss/Rec stolen Goods	2	1.2%
Sum	9	5.6%

MV Offenses

Driving w/o License	16	9.9%
Poss Stol. MV	2	1.2%
Driving w/ Suspended License	1	0.6%
Dr w/o Consent Owner	1	0.6%
Tampering w/MV	1	0.6%
Failure to Report an Accident	1	0.6%
Sum	22	13.6%

Non-Offense

Missing Person	17	10.5%
Sum	17	10.5%

Sex Offenses

1st Degree Child Molestation	1	0.6%
2nd Degree Child Molestation	1	0.6%
Sum	2	1.2%

Status

Poss Alc/Minor	1	0.6%
Sum	1	0.6%

Unknown

Investigation	4	2.5%
Susp. Person	2	1.2%
No Charge	1	0.6%
Sum	7	4.3%

Various Disorderly Behaviors

Disorderly Conduct	44	27.2%
Vandalism	8	4.9%
Trespassing	5	3.1%
Arson	1	0.6%
Resisting Arrest	1	0.6%
Sum	59	36.4%

Weapons Offenses

Poss Firearm	3	1.9%
Poss. Unspecified Weapon	3	1.9%
Sum	6	3.7%

Central Falls

Beginning Date: 1/1/2007

Ending Date: 12/31/2007

Offenses Summary

Various Disorderly Behaviors	59	36.4%
Assault Offenses	23	14.2%
MV Offenses	22	13.6%
Non-Offense	17	10.5%
Larceny Offenses	9	5.6%
Drug Offenses	9	5.6%
Unknown	7	4.3%
Court Violations/Warrants	7	4.3%
Weapons Offenses	6	3.7%
Sex Offenses	2	1.2%
Status	1	0.6%
Sum	162	100.0%

Types of Offenses

Criminal	137	84.6%
Non-Offense	17	10.5%
Unknown	7	4.3%
Status	1	0.6%
Sum	162	100.0%

Area of Detention

Secure Cell/Room	128	79.0%
Non Secure Area	34	21.0%
Sum	162	100.0%

Ages

10	1	0.6%	Sum	162	100.0%
11	2	1.2%			
12	14	8.6%			
13	9	5.6%			
14	21	13.0%			
15	38	23.5%			
16	49	30.2%			
17	28	17.3%			

Race

Hispanic	90	55.6%
Black	38	23.5%
White	32	19.8%
Other	1	0.6%
Asian/Pacific Island	1	0.6%
Sum	162	100.0%

Time Information

12 AM	6	3.7%	2 PM	16	9.9%
1 AM	6	3.7%	3 PM	15	9.3%
2 AM	1	0.6%	4 PM	11	6.8%
3 AM	6	3.7%	5 PM	12	7.4%
5 AM	2	1.2%	6 PM	9	5.6%
6 AM	2	1.2%	7 PM	4	2.5%
7 AM	1	0.6%	8 PM	6	3.7%
8 AM	2	1.2%	9 PM	4	2.5%
9 AM	9	5.6%	10 PM	9	5.6%
10 AM	6	3.7%	11 PM	10	6.2%
11 AM	11	6.8%	Sum	162	100.0%
12 PM	6	3.7%			
1 PM	8	4.9%			

Count of Sex

M	128	79.01%
F	34	20.99%
Sum	162	100.00%

Month Information

January	12	7.4%	August	13	8.0%
February	14	8.6%	September	8	4.9%
March	16	9.9%	October	20	12.3%
April	18	11.1%	November	13	8.0%
May	18	11.1%	December	9	5.6%
June	14	8.6%	Sum	162	100.0%
July	7	4.3%			

Charlestown

Beginning Date: 1/1/2007

Ending Date: 12/31/2007

Juvenile Detentions-

Assault Offenses

Assault	1	1.5%
Sum	1	1.5%

Drug Offenses

Poss Marijuana	5	7.7%
Sum	5	7.7%

Larceny Offenses

Poss/Rec stolen Goods	3	4.6%
Breaking & Entry	3	4.6%
Larceny	1	1.5%
Sum	7	10.8%

MV Offenses

Motor Vehicle Charges	3	4.6%
Reckless Driving	3	4.6%
Driving under Influence/Driving while Intoxicated	1	1.5%
Driving w/o License	1	1.5%
Sum	8	12.3%

Non-Offense

Missing Person	9	13.8%
Sum	9	13.8%

Sex Offenses

Sexual Assault	1	1.5%
Sum	1	1.5%

Status

Violation of Curfew (location)	7	10.8%
Poss Alc/Minor	7	10.8%
Wayward/Disobedient Child	6	9.2%
Sum	20	30.8%

Various Disorderly Behaviors

Disorderly Conduct	11	16.9%
Obstructing Police	1	1.5%
Trespassing	1	1.5%
Vandalism	1	1.5%
Sum	14	21.5%

Charlestown

Beginning Date: 1/1/2007

Ending Date: 12/31/2007

Offenses Summary

Status	20	30.8%
Various Disorderly Behaviors	14	21.5%
Non-Offense	9	13.8%
MV Offenses	8	12.3%
Larceny Offenses	7	10.8%
Drug Offenses	5	7.7%
Sex Offenses	1	1.5%
Assault Offenses	1	1.5%
Sum	65	100.0%

Ages

11	1	1.5%
12	3	4.6%
13	6	9.2%
14	9	13.8%
15	13	20.0%
16	19	29.2%
17	14	21.5%
Sum	65	100.0%

Time Information

12 AM	4	6.2%	9 PM	7	10.8%
1 AM	8	12.3%	10 PM	2	3.1%
2 AM	1	1.5%	Sum	65	100.0%
8 AM	1	1.5%			
9 AM	6	9.2%			
10 AM	1	1.5%			
1 PM	2	3.1%			
3 PM	3	4.6%			
4 PM	8	12.3%			
5 PM	8	12.3%			
6 PM	6	9.2%			
7 PM	6	9.2%			
8 PM	2	3.1%			

Month Information

January	8	12.3%	November	2	3.1%
February	4	6.2%	December	2	3.1%
May	8	12.3%	Sum	65	100.0%
June	9	13.8%			
July	23	35.4%			
August	6	9.2%			
October	3	4.6%			

Types of Offenses

Criminal	36	55.4%
Status	20	30.8%
Non-Offense	9	13.8%
Sum	65	100.0%

Area of Detention

Non Secure Area	62	95.4%
Secure Cell/Room	3	4.6%
Sum	65	100.0%

Race

White	57	87.7%
Black	4	6.2%
Native American	3	4.6%
Hispanic	1	1.5%
Sum	65	100.0%

Count of Sex

M	41	63.08%
F	18	27.69%
Not Reported	6	9.23%
Sum	65	100.0%

Coventry

Beginning Date: 1/1/2007

Ending Date: 12/31/2007

Juvenile Detentions-

Assault Offenses

Simple Assault	10	8.9%
Attempted Robbery	5	4.5%
Felony Assault	4	3.6%
Assault	3	2.7%
Sum	22	19.6%

Court Violations/Warrants

Warrant/Fugitive	3	2.7%
Viol of Home conf	2	1.8%
Sum	5	4.5%

Drug Offenses

Poss Marijuana	12	10.7%
Mfg/Del Unspecified Drug	1	0.9%
Poss unspecified narcotics	1	0.9%
Sum	14	12.5%

Larceny Offenses

Larceny	6	5.4%
Shoplifting	5	4.5%
Breaking & Entry	4	3.6%
Attempted B&E	2	1.8%
Attempted larceny	1	0.9%
Sum	18	16.1%

MV Offenses

Driving w/o License	4	3.6%
Driving under Influence/Driving while Intoxicated	2	1.8%
Dr w/o Consent Owner	1	0.9%
Driving w/ Suspended License	1	0.9%
Reckless Driving	1	0.9%
Sum	9	8.0%

Non-Offense

Refusing Breathalyzer	2	1.8%
Sum	2	1.8%

Status

Runaway	1	0.9%
Violation of Curfew (location)	1	0.9%
Sum	2	1.8%

Various Disorderly Behaviors

Disorderly Conduct	19	17.0%
Trespassing	6	5.4%
Malicious damage	6	5.4%
Vandalism	2	1.8%
Conspiracy	2	1.8%
Poss Fireworks	1	0.9%
Arson - 5th Degree	1	0.9%
Obstructing Police	1	0.9%
Sum	38	33.9%

Weapons Offenses

Poss Knife	2	1.8%
Sum	2	1.8%

Offenses Summary

Various Disorderly Behaviors	38	33.9%
Assault Offenses	22	19.6%
Larceny Offenses	18	16.1%
Drug Offenses	14	12.5%
MV Offenses	9	8.0%
Court Violations/Warrants	5	4.5%
Weapons Offenses	2	1.8%
Status	2	1.8%
Non-Offense	2	1.8%
Sum	112	100.0%

Ages

11	1	0.9%
12	3	2.7%
13	9	8.0%
14	20	17.9%
15	22	19.6%
16	33	29.5%
17	24	21.4%
Sum	112	100.0%

Time Information

12 AM	1	0.9%	4 PM	3	2.7%
2 AM	2	1.8%	5 PM	4	3.6%
3 AM	1	0.9%	6 PM	4	3.6%
5 AM	1	0.9%	7 PM	3	2.7%
7 AM	2	1.8%	8 PM	14	12.5%
8 AM	10	8.9%	9 PM	7	6.3%
9 AM	6	5.4%	10 PM	3	2.7%
10 AM	6	5.4%	11 PM	2	1.8%
11 AM	6	5.4%	Sum	112	100.0%
12 PM	6	5.4%			
1 PM	16	14.3%			
2 PM	9	8.0%			
3 PM	6	5.4%			

Month Information

January	12	10.7%	August	3	2.7%
February	12	10.7%	September	6	5.4%
March	17	15.2%	October	9	8.0%
April	8	7.1%	November	6	5.4%
May	17	15.2%	December	5	4.5%
June	8	7.1%	Sum	112	100.0%
July	9	8.0%			

Types of Offenses

Criminal	108	96.4%
Status	2	1.8%
Non-Offense	2	1.8%
Sum	112	100.0%

Area of Detention

Non Secure Area	110	98.2%
Secure Cell/Room	2	1.8%
Sum	112	100.0%

Race

White	107	95.5%
Black	4	3.6%
Asian/Pacific Island	1	0.9%
Sum	112	100.0%

Count of Sex

M	89	79.46%
F	23	20.54%
Sum	112	100.00%

Cranston

Beginning Date: 1/1/2007

Ending Date: 12/31/2007

Juvenile Detentions-

Assault Offenses

Simple Assault	14	7.4%
Assault	1	0.5%
Assault on a Police Officer	1	0.5%
Felony Assault	1	0.5%
Sum	17	8.9%

Court Violations/Warrants

Warrant/Fugitive	5	2.6%
Sum	5	2.6%

Drug Offenses

Poss Marijuana	6	3.2%
Poss Cocaine	1	0.5%
Sum	7	3.7%

Larceny Offenses

Shoplifting	67	35.3%
Breaking & Entry	22	11.6%
Larceny	7	3.7%
Poss Burglary Tools	2	1.1%
Embezzlement	1	0.5%
Sum	99	52.1%

MV Offenses

Poss Stol. MV	8	4.2%
Driving w/o License	3	1.6%
Motor Vehicle Charges	1	0.5%
Sum	12	6.3%

Non-Offense

Missing Person	1	0.5%
Sum	1	0.5%

Sex Offenses

1st Degree Child Molestation	1	0.5%
Sum	1	0.5%

Status

Poss Alc/Minor	1	0.5%
Runaway	1	0.5%
Wayward/Disobedient Child	1	0.5%
Sum	3	1.6%

Unknown

Investigation	10	5.3%
Susp. Person	1	0.5%
Sum	11	5.8%

Various Disorderly Behaviors

Vandalism	11	5.8%
Disorderly Conduct	11	5.8%
Possession of Spray Paint	4	2.1%
Arson - 6th Degree	3	1.6%
Trespassing	2	1.1%
Obstructing Police	1	0.5%
Conspiracy	1	0.5%
Crank/Obs Phone Calls	1	0.5%
Sum	34	17.9%

Offenses Summary

Larceny Offenses	99	52.1%
Various Disorderly Behaviors	34	17.9%
Assault Offenses	17	8.9%
MV Offenses	12	6.3%
Unknown	11	5.8%
Drug Offenses	7	3.7%
Court Violations/Warrants	5	2.6%
Status	3	1.6%
Sex Offenses	1	0.5%
Non-Offense	1	0.5%
Sum	190	100.0%

Types of Offenses

Criminal	175	92.1%
Unknown	11	5.8%
Status	3	1.6%
Non-Offense	1	0.5%
Sum	190	100.0%

Area of Detention

Non Secure Area	185	97.4%
Secure Cell/Room	5	2.6%
Sum	190	100.0%

Ages

Not Reported	4	2.1%	16	37	19.5%
8	3	1.6%	17	36	18.9%
9	1	0.5%	18	1	0.5%
10	6	3.2%	Sum	190	100.0%
12	8	4.2%			
13	17	8.9%			
14	33	17.4%			
15	44	23.2%			

Race

White	79	41.6%
Black	56	29.5%
Hispanic	33	17.4%
Asian/Pacific Island	22	11.6%
Sum	190	100.0%

Time Information

12 AM	3	1.6%	4 PM	15	7.9%
1 AM	7	3.7%	5 PM	10	5.3%
2 AM	4	2.1%	6 PM	10	5.3%
3 AM	2	1.1%	7 PM	10	5.3%
4 AM	1	0.5%	8 PM	4	2.1%
8 AM	5	2.6%	9 PM	5	2.6%
9 AM	14	7.4%	10 PM	5	2.6%
10 AM	6	3.2%	11 PM	4	2.1%
11 AM	19	10.0%	Sum	190	100.0%
12 PM	8	4.2%			
1 PM	8	4.2%			
2 PM	25	13.2%			
3 PM	25	13.2%			

Count of Sex

M	143	75.26%
F	44	23.16%
Not Reported	3	1.58%
Sum	190	100.00%

Month Information

January	39	20.5%	August	4	2.1%
February	17	8.9%	September	7	3.7%
March	27	14.2%	October	14	7.4%
April	24	12.6%	November	12	6.3%
May	19	10.0%	December	2	1.1%
June	17	8.9%	Sum	190	100.0%
July	8	4.2%			

Cumberland

Beginning Date: 1/1/2007

Ending Date: 12/31/2007

Juvenile Detentions-

Assault Offenses

Simple Assault	9	6.9%
Assault w/Dang Weapon	1	0.8%
Felony Assault	1	0.8%
Assault	1	0.8%
Sum	12	9.2%

Court Violations/Warrants

Warrant/Fugitive	1	0.8%
Sum	1	0.8%

Drug Offenses

Poss Marijuana	25	19.2%
Poss Cocaine	1	0.8%
Sum	26	20.0%

Larceny Offenses

Poss/Rec stolen Goods	3	2.3%
Larceny	3	2.3%
Breaking & Entry	2	1.5%
Shoplifting	1	0.8%
Sum	9	6.9%

MV Offenses

Driving w/o License	6	4.6%
Eluding	1	0.8%
Sum	7	5.4%

Non-Offense

Missing Person	1	0.8%
Sum	1	0.8%

Status

Poss Alc/Minor	7	5.4%
Runaway	2	1.5%
Truancy	2	1.5%
Sum	11	8.5%

Unknown

No Charge	9	6.9%
Protective Custody	7	5.4%
Sum	16	12.3%

Various Disorderly Behaviors

Disorderly Conduct	37	28.5%
Vandalism	7	5.4%
Obstructing Police	2	1.5%
Sum	46	35.4%

Weapons Offenses

Discharging a firearm	1	0.8%
Sum	1	0.8%

Offenses Summary

Various Disorderly Behaviors	46	35.4%
Drug Offenses	26	20.0%
Unknown	16	12.3%
Assault Offenses	12	9.2%
Status	11	8.5%
Larceny Offenses	9	6.9%
MV Offenses	7	5.4%
Weapons Offenses	1	0.8%
Non-Offense	1	0.8%
Court Violations/Warrants	1	0.8%
Sum	130	100.0%

Types of Offenses

Criminal	102	78.5%
Unknown	16	12.3%
Status	11	8.5%
Non-Offense	1	0.8%
Sum	130	100.0%

Area of Detention

Non Secure Area	71	54.6%
Secure Cell/Room	59	45.4%
Sum	130	100.0%

Ages

12	3	2.3%
13	7	5.4%
14	16	12.3%
15	34	26.2%
16	32	24.6%
17	38	29.2%
Sum	130	100.0%

Race

White	110	84.6%
Hispanic	15	11.5%
Black	5	3.8%
Sum	130	100.0%

Time Information

12 AM	8	6.2%	5 PM	5	3.8%
1 AM	3	2.3%	6 PM	3	2.3%
2 AM	1	0.8%	7 PM	12	9.2%
3 AM	5	3.8%	8 PM	6	4.6%
8 AM	8	6.2%	9 PM	7	5.4%
9 AM	18	13.8%	10 PM	1	0.8%
10 AM	10	7.7%	11 PM	6	4.6%
11 AM	9	6.9%	Sum	130	100.0%
12 PM	9	6.9%			
1 PM	8	6.2%			
2 PM	6	4.6%			
3 PM	2	1.5%			
4 PM	3	2.3%			

Count of Sex

M	98	75.38%
F	32	24.62%
Sum	130	100.00%

Month Information

January	14	10.8%	August	2	1.5%
February	10	7.7%	September	20	15.4%
March	9	6.9%	October	8	6.2%
April	12	9.2%	November	9	6.9%
May	20	15.4%	December	12	9.2%
June	12	9.2%	Sum	130	100.0%
July	2	1.5%			

Juvenile Detentions-

Assault Offenses

Simple Assault	3	3.5%
Assault	1	1.2%
Sum	4	4.7%

Drug Offenses

Poss Marijuana	8	9.4%
Sum	8	9.4%

Larceny Offenses

Breaking & Entry	3	3.5%
Larceny	2	2.4%
Sum	5	5.9%

MV Offenses

Driving under Influence/Driving while Intoxicated	1	1.2%
Sum	1	1.2%

Status

Poss Alc/Minor	24	28.2%
Wayward/Disobedient Child	10	11.8%
Runaway	6	7.1%
Truancy	1	1.2%
Sum	41	48.2%

Unknown

Susp. Person	3	3.5%
Investigation	2	2.4%
No Charge	2	2.4%
Unknown	1	1.2%
Sum	8	9.4%

Various Disorderly Behaviors

Malicious damage	10	11.8%
Disorderly Conduct	6	7.1%
Arson	1	1.2%
Drunkenness	1	1.2%
Sum	18	21.2%

East Greenwich

Beginning Date: 1/1/2007

Ending Date: 12/31/2007

Offenses Summary

Status	41	48.2%
Various Disorderly Behaviors	18	21.2%
Unknown	8	9.4%
Drug Offenses	8	9.4%
Larceny Offenses	5	5.9%
Assault Offenses	4	4.7%
MV Offenses	1	1.2%
Sum	85	100.0%

Ages

8	2	2.4%	Sum	85	100.0%
10	1	1.2%			
12	5	5.9%			
13	9	10.6%			
14	5	5.9%			
15	10	11.8%			
16	21	24.7%			
17	32	37.6%			

Time Information

12 AM	5	5.9%	5 PM	7	8.2%
1 AM	2	2.4%	6 PM	4	4.7%
2 AM	3	3.5%	7 PM	10	11.8%
5 AM	1	1.2%	8 PM	9	10.6%
7 AM	1	1.2%	9 PM	3	3.5%
8 AM	9	10.6%	10 PM	2	2.4%
9 AM	6	7.1%	11 PM	5	5.9%
10 AM	4	4.7%	Sum	85	100.0%
11 AM	3	3.5%			
12 PM	3	3.5%			
1 PM	3	3.5%			
3 PM	1	1.2%			
4 PM	4	4.7%			

Month Information

January	5	5.9%	August	3	3.5%
February	12	14.1%	September	4	4.7%
March	9	10.6%	October	12	14.1%
April	5	5.9%	November	5	5.9%
May	11	12.9%	December	6	7.1%
June	7	8.2%	Sum	85	100.0%
July	6	7.1%			

Types of Offenses

Status	42	49.4%
Criminal	35	41.2%
Unknown	8	9.4%
Sum	85	100.0%

Area of Detention

Non Secure Area	84	98.8%
Secure Cell/Room	1	1.2%
Sum	85	100.0%

Race

White	79	92.9%
Black	2	2.4%
Asian/Pacific Island	2	2.4%
Not Reported	1	1.2%
Hispanic	1	1.2%
Sum	85	100.0%

Count of Sex

M	62	72.94%
F	23	27.06%
Sum	85	100.00%

East Providence

Beginning Date: 1/1/2007

Ending Date: 12/31/2007

Juvenile Detentions-

Assault Offenses

Simple Assault	15	9.5%
Felony Assault	3	1.9%
Assault w/Dang Weapon	1	0.6%
Sum	19	12.0%

Court Violations/Warrants

Violation of court Order	10	6.3%
Warrant/Fugitive	4	2.5%
Viol of Home conf	1	0.6%
Sum	15	9.5%

Drug Offenses

Poss Marijuana	15	9.5%
Sum	15	9.5%

Larceny Offenses

Shoplifting	16	10.1%
Poss/Rec stolen Goods	8	5.1%
Larceny	6	3.8%
Breaking & Entry	5	3.2%
Attempted B&E	3	1.9%
Sum	38	24.1%

MV Offenses

Driving w/o License	4	2.5%
Poss Stol. MV	1	0.6%
Sum	5	3.2%

Status

Poss Alc/Minor	12	7.6%
Wayward/Disobedient Child	4	2.5%
Runaway	1	0.6%
Sum	17	10.8%

Various Disorderly Behaviors

Disorderly Conduct	28	17.7%
Vandalism	12	7.6%
Trespassing	5	3.2%
Escapee	1	0.6%
Resisting Arrest	1	0.6%
Sum	47	29.7%

Weapons Offenses

Poss Firearm	1	0.6%
Poss. Unspecified Weapon	1	0.6%
Sum	2	1.3%

East Providence

Beginning Date: 1/1/2007

Ending Date: 12/31/2007

Offenses Summary

Various Disorderly Behaviors	47	29.7%		
Larceny Offenses	38	24.1%		
Assault Offenses	19	12.0%		
Status	17	10.8%		
Drug Offenses	15	9.5%		
Court Violations/Warrants	15	9.5%		
MV Offenses	5	3.2%		
Weapons Offenses	2	1.3%		
Sum	158	100.0%		

Ages

9	2	1.3%	Sum	158	100.0%
11	2	1.3%			
12	8	5.1%			
13	13	8.2%			
14	16	10.1%			
15	40	25.3%			
16	44	27.8%			
17	33	20.9%			

Time Information

12 AM	2	1.3%	2 PM	10	6.3%
1 AM	1	0.6%	3 PM	6	3.8%
2 AM	6	3.8%	4 PM	11	7.0%
3 AM	2	1.3%	5 PM	26	16.5%
5 AM	3	1.9%	6 PM	8	5.1%
6 AM	2	1.3%	7 PM	20	12.7%
7 AM	2	1.3%	8 PM	17	10.8%
8 AM	1	0.6%	9 PM	3	1.9%
9 AM	3	1.9%	10 PM	9	5.7%
10 AM	2	1.3%	11 PM	5	3.2%
11 AM	3	1.9%	Sum	158	100.0%
12 PM	6	3.8%			
1 PM	10	6.3%			

Month Information

January	6	3.8%	August	12	7.6%
February	12	7.6%	September	13	8.2%
March	11	7.0%	October	16	10.1%
April	14	8.9%	November	14	8.9%
May	19	12.0%	December	11	7.0%
June	12	7.6%	Sum	158	100.0%
July	18	11.4%			

Types of Offenses

Criminal	141	89.2%
Status	17	10.8%
Sum	158	100.0%

Area of Detention

Secure Cell/Room	85	53.8%
Non Secure Area	72	45.6%
Not Reported	1	0.6%
Sum	158	100.0%

Race

White	100	63.3%
Black	52	32.9%
Hispanic	5	3.2%
Not Reported	1	0.6%
Sum	158	100.0%

Count of Sex

M	116	73.42%
F	41	25.95%
Not Reported	1	0.63%
Sum	158	100.00%

Juvenile Detentions-

MV Offenses

Eluding	5	25.0%
Driving under Influence/Driving while Intoxicated	1	5.0%
Sum	6	30.0%

Sex Offenses

Sexual Assault	1	5.0%
Sum	1	5.0%

Status

Runaway	3	15.0%
Tobacco Related Offense	1	5.0%
Wayward/Disobedient Child	1	5.0%
Sum	5	25.0%

Various Disorderly Behaviors

Vandalism	5	25.0%
Obstructing Police	3	15.0%
Sum	8	40.0%

Foster

Beginning Date: 1/1/2007

Ending Date: 12/31/2007

Offenses Summary

Various Disorderly Behaviors	8	40.0%
MV Offenses	6	30.0%
Status	5	25.0%
Sex Offenses	1	5.0%
Sum	20	100.0%

Ages

11	1	5.0%
14	1	5.0%
15	4	20.0%
16	4	20.0%
17	10	50.0%
Sum	20	100.0%

Time Information

1 AM	1	5.0%
10 AM	1	5.0%
12 PM	1	5.0%
1 PM	1	5.0%
3 PM	2	10.0%
4 PM	7	35.0%
5 PM	1	5.0%
6 PM	4	20.0%
7 PM	1	5.0%
9 PM	1	5.0%
Sum	20	100.0%

Month Information

February	4	20.0%	October	1	5.0%
March	1	5.0%	December	1	5.0%
April	1	5.0%	Sum	20	100.0%
May	2	10.0%			
June	4	20.0%			
July	1	5.0%			
August	5	25.0%			

Types of Offenses

Criminal	15	75.0%
Status	5	25.0%
Sum	20	100.0%

Area of Detention

Non Secure Area	19	95.0%
Secure Cell/Room	1	5.0%
Sum	20	100.0%

Race

White	19	95.0%
Asian/Pacific Island	1	5.0%
Sum	20	100.0%

Count of Sex

M	13	65.00%
F	7	35.00%
Sum	20	100.00%

Juvenile Detentions-

Assault Offenses

Simple Assault	5	11.1%
Sum	5	11.1%

Court Violations/Warrants

Warrant/Fugitive	1	2.2%
Sum	1	2.2%

Drug Offenses

Poss Marijuana	6	13.3%
Sum	6	13.3%

Larceny Offenses

Breaking & Entry	1	2.2%
Larceny	1	2.2%
Sum	2	4.4%

MV Offenses

Driving w/o License	3	6.7%
Reckless Driving	1	2.2%
Sum	4	8.9%

Status

Poss Alc/Minor	7	15.6%
Sum	7	15.6%

Various Disorderly Behaviors

Malicious damage	10	22.2%
Arson - 6th Degree	5	11.1%
Trespassing	4	8.9%
Bomb Threat	1	2.2%
Sum	20	44.4%

Offenses Summary

Various Disorderly Behaviors	20	44.4%
Status	7	15.6%
Drug Offenses	6	13.3%
Assault Offenses	5	11.1%
MV Offenses	4	8.9%
Larceny Offenses	2	4.4%
Court Violations/Warrants	1	2.2%
Sum	45	100.0%

Ages

10	1	2.2%	Sum	45	100.0%
11	1	2.2%			
12	2	4.4%			
13	4	8.9%			
14	6	13.3%			
15	11	24.4%			
16	11	24.4%			
17	9	20.0%			

Time Information

12 AM	1	2.2%	11 PM	1	2.2%
2 AM	3	6.7%	Sum	45	100.0%
10 AM	3	6.7%			
11 AM	4	8.9%			
12 PM	1	2.2%			
1 PM	2	4.4%			
2 PM	3	6.7%			
4 PM	7	15.6%			
5 PM	3	6.7%			
6 PM	3	6.7%			
8 PM	6	13.3%			
9 PM	7	15.6%			
10 PM	1	2.2%			

Month Information

February	2	4.4%	September	1	2.2%
March	4	8.9%	October	1	2.2%
April	10	22.2%	November	1	2.2%
May	3	6.7%	December	4	8.9%
June	3	6.7%	Sum	45	100.0%
July	6	13.3%			
August	10	22.2%			

Types of Offenses

Criminal	38	84.4%
Status	7	15.6%
Sum	45	100.0%

Area of Detention

Non Secure Area	44	97.8%
Secure Cell/Room	1	2.2%
Sum	45	100.0%

Race

White	44	97.8%
Black	1	2.2%
Sum	45	100.0%

Count of Sex

M	42	93.33%
F	3	6.67%
Sum	45	100.00%

Juvenile Detentions-

Assault Offenses

Simple Assault	4	12.9%
Felony Assault	1	3.2%
Sum	5	16.1%

Court Violations/Warrants

Warrant/Fugitive	1	3.2%
Sum	1	3.2%

Drug Offenses

Poss Marijuana	4	12.9%
Poss unspecified narcotics	2	6.5%
Sum	6	19.4%

Larceny Offenses

Breaking & Entry	2	6.5%
Attempted larceny	1	3.2%
Sum	3	9.7%

MV Offenses

Driving under Influence/Driving while Intoxicated	2	6.5%
Driving w/o License	1	3.2%
Reckless Driving	1	3.2%
Sum	4	12.9%

Non-Offense

Missing Person	1	3.2%
Sum	1	3.2%

Status

Wayward/Disobedient Child	2	6.5%
Poss Alc/Minor	2	6.5%
Runaway	2	6.5%
Sum	6	19.4%

Unknown

Susp. Person	1	3.2%
Sum	1	3.2%

Various Disorderly Behaviors

Disorderly Conduct	1	3.2%
Filing false report	1	3.2%
Obstructing Police	1	3.2%
Arson - 6th Degree	1	3.2%
Sum	4	12.9%

Hopkinton

Beginning Date: 1/1/2007

Ending Date: 12/31/2007

Offenses Summary

Status	6	19.4%
Drug Offenses	6	19.4%
Assault Offenses	5	16.1%
Various Disorderly Behaviors	4	12.9%
MV Offenses	4	12.9%
Larceny Offenses	3	9.7%
Unknown	1	3.2%
Non-Offense	1	3.2%
Court Violations/Warrants	1	3.2%
Sum	31	100.0%

Ages

Not Reported	1	3.2%
13	3	9.7%
14	3	9.7%
15	4	12.9%
16	9	29.0%
17	11	35.5%
Sum	31	100.0%

Time Information

1 AM	2	6.5%	11 PM	3	9.7%
2 AM	2	6.5%	Sum	31	100.0%
3 AM	5	16.1%			
5 AM	1	3.2%			
11 AM	1	3.2%			
12 PM	1	3.2%			
3 PM	1	3.2%			
4 PM	3	9.7%			
5 PM	4	12.9%			
6 PM	1	3.2%			
7 PM	5	16.1%			
9 PM	1	3.2%			
10 PM	1	3.2%			

Month Information

January	3	9.7%	September	3	9.7%
March	3	9.7%	October	1	3.2%
April	3	9.7%	November	2	6.5%
May	1	3.2%	December	3	9.7%
June	4	12.9%	Sum	31	100.0%
July	5	16.1%			
August	3	9.7%			

Types of Offenses

Criminal	23	74.2%
Status	6	19.4%
Unknown	1	3.2%
Non-Offense	1	3.2%
Sum	31	100.0%

Area of Detention

Secure Cell/Room	21	67.7%
Non Secure Area	10	32.3%
Sum	31	100.0%

Race

White	31	100.0%
Sum	31	100.0%

Count of Sex

M	25	80.65%
F	6	19.35%
Sum	31	100.00%

Juvenile Detentions-

Assault Offenses

Simple Assault	2	4.9%
Sum	2	4.9%

Court Violations/Warrants

Violation of court Order	1	2.4%
Sum	1	2.4%

Drug Offenses

Poss Marijuana	1	2.4%
Sum	1	2.4%

Larceny Offenses

Breaking & Entry	4	9.8%
Larceny	1	2.4%
Sum	5	12.2%

MV Offenses

Driving w/ Suspended License	1	2.4%
Sum	1	2.4%

Status

Poss Alc/Minor	20	48.8%
Sum	20	48.8%

Various Disorderly Behaviors

Arson	4	9.8%
Disorderly Conduct	4	9.8%
Vandalism	2	4.9%
Sum	10	24.4%

Weapons Offenses

Poss. Unspecified Weapon	1	2.4%
Sum	1	2.4%

Jamestown

Beginning Date: 1/1/2007

Ending Date: 12/31/2007

Offenses Summary

Status	20	48.8%
Various Disorderly Behaviors	10	24.4%
Larceny Offenses	5	12.2%
Assault Offenses	2	4.9%
Weapons Offenses	1	2.4%
MV Offenses	1	2.4%
Drug Offenses	1	2.4%
Court Violations/Warrants	1	2.4%
Sum	41	100.0%

Ages

10	1	2.4%
13	1	2.4%
14	7	17.1%
15	7	17.1%
16	11	26.8%
17	14	34.1%
Sum	41	100.0%

Time Information

12 AM	14	34.1%
1 AM	2	4.9%
2 AM	2	4.9%
8 AM	2	4.9%
11 AM	1	2.4%
12 PM	2	4.9%
1 PM	3	7.3%
2 PM	5	12.2%
3 PM	2	4.9%
7 PM	2	4.9%
8 PM	6	14.6%
Sum	41	100.0%

Month Information

February	6	14.6%	November	1	2.4%
March	2	4.9%	Sum	41	100.0%
April	4	9.8%			
May	2	4.9%			
June	2	4.9%			
September	7	17.1%			
October	17	41.5%			

Types of Offenses

Criminal	21	51.2%
Status	20	48.8%
Sum	41	100.0%

Area of Detention

Non Secure Area	41	100.0%
Sum	41	100.0%

Race

White	39	95.1%
Black	2	4.9%
Sum	41	100.0%

Count of Sex

M	35	85.37%
F	6	14.63%
Sum	41	100.00%

Johnston

Beginning Date: 1/1/2007

Ending Date: 12/31/2007

Juvenile Detentions-

Assault Offenses

Simple Assault	11	15.1%
Assault	5	6.8%
Felony Assault	2	2.7%
Assault on a Police Officer	1	1.4%
Robbery	1	1.4%
Sum	20	27.4%

Court Violations/Warrants

Warrant/Fugitive	2	2.7%
Violation of court Order	1	1.4%
Sum	3	4.1%

Drug Offenses

Poss Marijuana	11	15.1%
Mfg/Del Marijuana	1	1.4%
Poss w/int deliver unspecified	1	1.4%
Sum	13	17.8%

Larceny Offenses

Breaking & Entry	1	1.4%
Shoplifting	1	1.4%
Counterfeiting/Passing Counterfeit Instrument	1	1.4%
Sum	3	4.1%

MV Offenses

Dr w/o Consent Owner	1	1.4%
Driving w/o License	1	1.4%
Reckless Driving	1	1.4%
Sum	3	4.1%

Non-Offense

Missing Person	2	2.7%
Sum	2	2.7%

Status

Runaway	4	5.5%
Sum	4	5.5%

Unknown

Investigation	2	2.7%
Sum	2	2.7%

Various Disorderly Behaviors

Disorderly Conduct	8	11.0%
Vandalism	6	8.2%
Conspiracy	3	4.1%
Arson	1	1.4%
Sum	18	24.7%

Weapons Offenses

Poss Firearm	3	4.1%
Poss Knife	1	1.4%
Poss. Unspecified Weapon	1	1.4%
Sum	5	6.8%

Offenses Summary

Assault Offenses	20	27.4%
Various Disorderly Behaviors	18	24.7%
Drug Offenses	13	17.8%
Weapons Offenses	5	6.8%
Status	4	5.5%
MV Offenses	3	4.1%
Larceny Offenses	3	4.1%
Court Violations/Warrants	3	4.1%
Unknown	2	2.7%
Non-Offense	2	2.7%
Sum	73	100.0%

Types of Offenses

Criminal	65	89.0%
Status	4	5.5%
Unknown	2	2.7%
Non-Offense	2	2.7%
Sum	73	100.0%

Area of Detention

Non Secure Area	72	98.6%
Secure Cell/Room	1	1.4%
Sum	73	100.0%

Ages

12	2	2.7%
13	7	9.6%
14	10	13.7%
15	17	23.3%
16	20	27.4%
17	17	23.3%
Sum	73	100.0%

Race

White	56	76.7%
Hispanic	8	11.0%
Black	7	9.6%
Other	1	1.4%
Asian/Pacific Island	1	1.4%
Sum	73	100.0%

Time Information

12 AM	2	2.7%	6 PM	3	4.1%
1 AM	2	2.7%	7 PM	5	6.8%
2 AM	1	1.4%	8 PM	4	5.5%
8 AM	2	2.7%	9 PM	9	12.3%
9 AM	2	2.7%	10 PM	5	6.8%
10 AM	1	1.4%	11 PM	3	4.1%
11 AM	6	8.2%	Sum	73	100.0%
12 PM	5	6.8%			
1 PM	5	6.8%			
2 PM	9	12.3%			
3 PM	3	4.1%			
4 PM	5	6.8%			
5 PM	1	1.4%			

Count of Sex

M	54	73.97%
F	19	26.03%
Sum	73	100.00%

Month Information

January	10	13.7%	August	4	5.5%
February	8	11.0%	September	4	5.5%
March	7	9.6%	November	7	9.6%
April	12	16.4%	December	9	12.3%
May	6	8.2%	Sum	73	100.0%
June	4	5.5%			
July	2	2.7%			

Lincoln

Beginning Date: 1/1/2007

Ending Date: 12/31/2007

Juvenile Detentions-

Assault Offenses

Simple Assault	6	5.8%
Felony Assault	1	1.0%
Robbery	1	1.0%
Sum	8	7.7%

Court Violations/Warrants

Warrant/Fugitive	2	1.9%
Violation of court Order	1	1.0%
Sum	3	2.9%

Drug Offenses

Poss Marijuana	6	5.8%
Sum	6	5.8%

Larceny Offenses

Shoplifting	18	17.3%
Larceny	9	8.7%
Breaking & Entry	4	3.8%
Poss/Rec stolen Goods	1	1.0%
Sum	32	30.8%

MV Offenses

Driving w/o License	2	1.9%
Driving under Influence/Driving while Intoxicated	1	1.0%
Sum	3	2.9%

Non-Offense

Missing Person	1	1.0%
Sum	1	1.0%

Sex Offenses

Sexual Assault	1	1.0%
Sum	1	1.0%

Status

Poss Alc/Minor	9	8.7%
Runaway	1	1.0%
Sum	10	9.6%

Unknown

Investigation	1	1.0%
Sum	1	1.0%

Various Disorderly Behaviors

Disorderly Conduct	30	28.8%
Vandalism	6	5.8%
Crank/Obs Phone Calls	2	1.9%
Sum	38	36.5%

Weapons Offenses

Poss Knife	1	1.0%
Sum	1	1.0%

Offenses Summary

Various Disorderly Behaviors	38	36.5%
Larceny Offenses	32	30.8%
Status	10	9.6%
Assault Offenses	8	7.7%
Drug Offenses	6	5.8%
MV Offenses	3	2.9%
Court Violations/Warrants	3	2.9%
Weapons Offenses	1	1.0%
Unknown	1	1.0%
Sex Offenses	1	1.0%
Non-Offense	1	1.0%
Sum	104	100.0%

Ages

9	1	1.0%
13	17	16.3%
14	12	11.5%
15	16	15.4%
16	30	28.8%
17	28	26.9%
Sum	104	100.0%

Time Information

0	0.0%	7 PM	3	2.9%	
2 AM	1	1.0%	9 PM	9	8.8%
8 AM	2	2.0%	10 PM	3	2.9%
9 AM	6	5.9%	Sum	102	100.0%
10 AM	8	7.8%			
11 AM	5	4.9%			
12 PM	11	10.8%			
1 PM	10	9.8%			
2 PM	6	5.9%			
3 PM	6	5.9%			
4 PM	4	3.9%			
5 PM	8	7.8%			
6 PM	20	19.6%			

Month Information

January	16	15.4%	August	3	2.9%
February	21	20.2%	September	6	5.8%
March	10	9.6%	October	4	3.8%
April	3	2.9%	November	11	10.6%
May	12	11.5%	December	9	8.7%
June	7	6.7%	Sum	104	100.0%
July	2	1.9%			

Types of Offenses

Criminal	92	88.5%
Status	10	9.6%
Unknown	1	1.0%
Non-Offense	1	1.0%
Sum	104	100.0%

Area of Detention

Secure Cell/Room	53	51.0%
Non Secure Area	51	49.0%
Sum	104	100.0%

Race

White	92	88.5%
Black	12	11.5%
Sum	104	100.0%

Count of Sex

M	75	72.12%
F	29	27.88%
Sum	104	100.00%

Little Compton

Beginning Date: 1/1/2007

Ending Date: 12/31/2007

Juvenile Detentions-

There were no juveniles detained by the Little Compton Police Department in 2007.

Middletown

Beginning Date: 1/1/2007

Ending Date: 12/31/2007

Juvenile Detentions-

Assault Offenses

Simple Assault	11	9.3%
Assault on a Police Officer	1	0.8%
Sum	12	10.2%

Court Violations/Warrants

Warrant/Fugitive	6	5.1%
Sum	6	5.1%

Drug Offenses

Poss Marijuana	14	11.9%
Sum	14	11.9%

Larceny Offenses

Larceny	7	5.9%
Breaking & Entry	4	3.4%
Poss/Rec stolen Goods	4	3.4%
Shoplifting	3	2.5%
Sum	18	15.3%

MV Offenses

Driving w/o License	5	4.2%
Driving under Influence/Driving while Intoxicated	4	3.4%
Lv Scene Accident/Personal Injury	2	1.7%
Reckless Driving	1	0.8%
Tampering w/MV	1	0.8%
Driving w/ Suspended License	1	0.8%
Sum	14	11.9%

Status

Runaway	13	11.0%
Poss Alc/Minor	8	6.8%
Sum	21	17.8%

Various Disorderly Behaviors

Disorderly Conduct	20	16.9%
Vandalism	8	6.8%
Malicious damage	3	2.5%
Arson - 4th Degree	1	0.8%
Sum	32	27.1%

Weapons Offenses

Poss. Unspecified Weapon	1	0.8%
Sum	1	0.8%

Middletown

Beginning Date: 1/1/2007

Ending Date: 12/31/2007

Offenses Summary

Various Disorderly Behaviors	32	27.1%
Status	21	17.8%
Larceny Offenses	18	15.3%
MV Offenses	14	11.9%
Drug Offenses	14	11.9%
Assault Offenses	12	10.2%
Court Violations/Warrants	6	5.1%
Weapons Offenses	1	0.8%
Sum	118	100.0%

Ages

12	1	0.8%
13	5	4.2%
14	19	16.1%
15	19	16.1%
16	41	34.7%
17	33	28.0%
Sum	118	100.0%

Time Information

12 AM	6	5.1%	3 PM	6	5.1%
1 AM	7	5.9%	4 PM	2	1.7%
2 AM	6	5.1%	5 PM	13	11.0%
3 AM	3	2.5%	6 PM	5	4.2%
4 AM	2	1.7%	7 PM	3	2.5%
7 AM	1	0.8%	8 PM	6	5.1%
8 AM	5	4.2%	9 PM	7	5.9%
9 AM	4	3.4%	10 PM	8	6.8%
10 AM	3	2.5%	11 PM	3	2.5%
11 AM	5	4.2%	Sum	118	100.0%
12 PM	9	7.6%			
1 PM	11	9.3%			
2 PM	3	2.5%			

Month Information

January	12	10.2%	August	6	5.1%
February	9	7.6%	September	5	4.2%
March	10	8.5%	October	8	6.8%
April	13	11.0%	November	13	11.0%
May	10	8.5%	December	11	9.3%
June	13	11.0%	Sum	118	100.0%
July	8	6.8%			

Types of Offenses

Criminal	97	82.2%
Status	21	17.8%
Sum	118	100.0%

Area of Detention

Non Secure Area	118	100.0%
Sum	118	100.0%

Race

White	79	66.9%
Black	35	29.7%
Hispanic	3	2.5%
Asian/Pacific Island	1	0.8%
Sum	118	100.0%

Count of Sex

M	78	66.10%
F	40	33.90%
Sum	118	100.00%

Narragansett

Beginning Date: 1/1/2007

Ending Date: 12/31/2007

Juvenile Detentions-

Assault Offenses

Assault	5	11.6%
Sum	5	11.6%

Court Violations/Warrants

Warrant/Fugitive	1	2.3%
Sum	1	2.3%

Drug Offenses

Poss Marijuana	6	14.0%
Sum	6	14.0%

Larceny Offenses

Breaking & Entry	6	14.0%
Larceny	6	14.0%
Poss/Rec stolen Goods	5	11.6%
Shoplifting	2	4.7%
Sum	19	44.2%

MV Offenses

Driving w/o License	1	2.3%
Reckless Driving	1	2.3%
Sum	2	4.7%

Status

Poss Alc/Minor	5	11.6%
Truancy	1	2.3%
Sum	6	14.0%

Various Disorderly Behaviors

Vandalism	2	4.7%
Disorderly Conduct	1	2.3%
Sum	3	7.0%

Weapons Offenses

Poss Firearm	1	2.3%
Sum	1	2.3%

Narragansett

Beginning Date: 1/1/2007

Ending Date: 12/31/2007

Offenses Summary

Larceny Offenses	19	44.2%
Status	6	14.0%
Drug Offenses	6	14.0%
Assault Offenses	5	11.6%
Various Disorderly Behaviors	3	7.0%
MV Offenses	2	4.7%
Weapons Offenses	1	2.3%
Court Violations/Warrants	1	2.3%
Sum	43	100.0%

Ages

13	1	2.3%
14	3	7.0%
15	8	18.6%
16	17	39.5%
17	14	32.6%
Sum	43	100.0%

Time Information

12 AM	3	7.0%	4 PM	3	7.0%
1 AM	2	4.7%	6 PM	2	4.7%
2 AM	1	2.3%	7 PM	1	2.3%
3 AM	1	2.3%	8 PM	2	4.7%
4 AM	2	4.7%	9 PM	2	4.7%
5 AM	1	2.3%	10 PM	2	4.7%
6 AM	1	2.3%	11 PM	2	4.7%
10 AM	1	2.3%	Sum	43	100.0%
11 AM	1	2.3%			
12 PM	1	2.3%			
1 PM	1	2.3%			
2 PM	9	20.9%			
3 PM	5	11.6%			

Month Information

January	3	7.0%	August	2	4.7%
February	1	2.3%	September	1	2.3%
March	2	4.7%	October	2	4.7%
April	5	11.6%	November	4	9.3%
May	7	16.3%	December	1	2.3%
June	11	25.6%	Sum	43	100.0%
July	4	9.3%			

Types of Offenses

Criminal	37	86.0%
Status	6	14.0%
Sum	43	100.0%

Area of Detention

Non Secure Area	40	93.0%
Secure Cell/Room	3	7.0%
Sum	43	100.0%

Race

White	38	88.4%
Black	5	11.6%
Sum	43	100.0%

Count of Sex

M	40	93.02%
F	3	6.98%
Sum	43	100.00%

New Shoreham

Beginning Date: 1/1/2007

Ending Date: 12/31/2007

Juvenile Detentions-

Assault Offenses

Assault	1	4.5%
Sum	1	4.5%

Drug Offenses

Poss Marijuana	7	31.8%
Sum	7	31.8%

Larceny Offenses

Breaking & Entry	7	31.8%
Shoplifting	2	9.1%
Sum	9	40.9%

MV Offenses

Driving under Influence/Driving while Intoxicated	1	4.5%
Sum	1	4.5%

Status

Poss Alc/Minor	2	9.1%
Sum	2	9.1%

Various Disorderly Behaviors

Disorderly Conduct	2	9.1%
Sum	2	9.1%

New Shoreham

Beginning Date: 1/1/2007

Ending Date: 12/31/2007

Offenses Summary

Larceny Offenses	9	40.9%
Drug Offenses	7	31.8%
Various Disorderly Behaviors	2	9.1%
Status	2	9.1%
MV Offenses	1	4.5%
Assault Offenses	1	4.5%
Sum	22	100.0%

Ages

14	6	27.3%
15	6	27.3%
16	7	31.8%
17	3	13.6%
Sum	22	100.0%

Time Information

12 AM	1	4.5%
2 PM	2	9.1%
3 PM	11	50.0%
4 PM	3	13.6%
6 PM	1	4.5%
7 PM	1	4.5%
9 PM	3	13.6%
Sum	22	100.0%

Month Information

January	1	4.5%	Sum	22	100.0%
February	7	31.8%			
March	1	4.5%			
April	4	18.2%			
May	3	13.6%			
June	1	4.5%			
July	5	22.7%			

Types of Offenses

Criminal	20	90.9%
Status	2	9.1%
Sum	22	100.0%

Area of Detention

Non Secure Area	20	90.9%
Secure Cell/Room	2	9.1%
Sum	22	100.0%

Race

White	22	100.0%
Sum	22	100.0%

Count of Sex

M	14	63.64%
F	8	36.36%
Sum	22	100.00%

Juvenile Detentions-

Assault Offenses

Simple Assault	13	18.3%
Felony Assault	6	8.5%
Domestic Assault	3	4.2%
Robbery	1	1.4%
Sum	23	32.4%

Court Violations/Warrants

Warrant/Fugitive	3	4.2%
Violation of court Order	2	2.8%
Viol of Home conf	1	1.4%
Sum	6	8.5%

Drug Offenses

Poss Marijuana	1	1.4%
Poss Cocaine	1	1.4%
Mfg/Del Cocaine	1	1.4%
Sum	3	4.2%

Larceny Offenses

Shoplifting	7	9.9%
Larceny	5	7.0%
Breaking & Entry	1	1.4%
Poss/Rec stolen Goods	1	1.4%
Sum	14	19.7%

MV Offenses

Lv Scene Accident/Property Damage	1	1.4%
Driving under Influence/Driving while Intoxicated	1	1.4%
Sum	2	2.8%

Various Disorderly Behaviors

Disorderly Conduct	10	14.1%
Vandalism	9	12.7%
Obstructing Police	3	4.2%
Sum	22	31.0%

Weapons Offenses

Poss Firearm	1	1.4%
Sum	1	1.4%

Offenses Summary

Assault Offenses	23	32.4%
Various Disorderly Behaviors	22	31.0%
Larceny Offenses	14	19.7%
Court Violations/Warrants	6	8.5%
Drug Offenses	3	4.2%
MV Offenses	2	2.8%
Weapons Offenses	1	1.4%
Sum	71	100.0%

Ages

13	3	4.2%
14	14	19.7%
15	10	14.1%
16	27	38.0%
17	17	23.9%
Sum	71	100.0%

Time Information

12 AM	6	8.5%	5 PM	1	1.4%
1 AM	2	2.8%	6 PM	4	5.6%
2 AM	5	7.0%	7 PM	7	9.9%
5 AM	1	1.4%	8 PM	8	11.3%
6 AM	1	1.4%	9 PM	1	1.4%
8 AM	1	1.4%	10 PM	7	9.9%
10 AM	3	4.2%	11 PM	4	5.6%
11 AM	1	1.4%	Sum	71	100.0%
12 PM	4	5.6%			
1 PM	5	7.0%			
2 PM	2	2.8%			
3 PM	3	4.2%			
4 PM	5	7.0%			

Month Information

January	6	8.5%	August	13	18.3%
February	7	9.9%	September	7	9.9%
March	4	5.6%	October	11	15.5%
April	1	1.4%	November	2	2.8%
May	8	11.3%	December	1	1.4%
June	5	7.0%	Sum	71	100.0%
July	6	8.5%			

Types of Offenses

Criminal	71	100.0%
Sum	71	100.0%

Area of Detention

Secure Cell/Room	71	100.0%
Sum	71	100.0%

Race

White	35	49.3%
Black	35	49.3%
Asian/Pacific Island	1	1.4%
Sum	71	100.0%

Count of Sex

M	45	63.38%
F	26	36.62%
Sum	71	100.00%

North Kingstown

Beginning Date: 1/1/2007

Ending Date: 12/31/2007

Juvenile Detentions-

Assault Offenses

Simple Assault	11	10.9%
Felony Assault	3	3.0%
Assault	1	1.0%
Sum	15	14.9%

Court Violations/Warrants

Warrant/Fugitive	3	3.0%
Sum	3	3.0%

Drug Offenses

Poss Marijuana	14	13.9%
Mfg/Del Unspecified Drug	1	1.0%
Sum	15	14.9%

Larceny Offenses

Larceny	10	9.9%
Shoplifting	5	5.0%
Breaking & Entry	4	4.0%
Poss/Rec stolen Goods	2	2.0%
Check/Forgery	1	1.0%
Sum	22	21.8%

MV Offenses

Driving w/o License	3	3.0%
Driving w/ Suspended License	2	2.0%
Dr w/o Consent Owner	1	1.0%
Driving under Influence/Driving while Intoxicated	1	1.0%
Sum	7	6.9%

Non-Offense

Missing Person	1	1.0%
Sum	1	1.0%

Sex Offenses

1st Degree Child Molestation	1	1.0%
Sum	1	1.0%

Status

Poss Alc/Minor	3	3.0%
Wayward/Disobedient Child	2	2.0%
Runaway	1	1.0%
Sum	6	5.9%

Unknown

Protective Custody	12	11.9%
Sum	12	11.9%

Various Disorderly Behaviors

Disorderly Conduct	9	8.9%
Vandalism	2	2.0%
Conspiracy	2	2.0%
Crank/Obs Phone Calls	1	1.0%
Obstructing Police	1	1.0%
Trespassing	1	1.0%
Arson - 4th Degree	1	1.0%
Sum	17	16.8%

Weapons Offenses

Poss Firearm	1	1.0%
Poss. Unspecified Weapon	1	1.0%
Sum	2	2.0%

North Kingstown

Beginning Date: 1/1/2007

Ending Date: 12/31/2007

Offenses Summary

Larceny Offenses	22	21.8%
Various Disorderly Behaviors	17	16.8%
Drug Offenses	15	14.9%
Assault Offenses	15	14.9%
Unknown	12	11.9%
MV Offenses	7	6.9%
Status	6	5.9%
Court Violations/Warrants	3	3.0%
Weapons Offenses	2	2.0%
Sex Offenses	1	1.0%
Non-Offense	1	1.0%
Sum	101	100.0%

Ages

Not Reported	1	1.0%	17	26	25.7%
9	1	1.0%	Sum	101	100.0%
11	2	2.0%			
12	8	7.9%			
13	8	7.9%			
14	8	7.9%			
15	21	20.8%			
16	26	25.7%			

Time Information

12 AM	2	2.0%	3 PM	6	5.9%
1 AM	4	4.0%	4 PM	9	8.9%
2 AM	4	4.0%	5 PM	8	7.9%
3 AM	4	4.0%	6 PM	7	6.9%
4 AM	3	3.0%	7 PM	3	3.0%
5 AM	1	1.0%	9 PM	9	8.9%
8 AM	4	4.0%	10 PM	1	1.0%
9 AM	6	5.9%	11 PM	5	5.0%
10 AM	3	3.0%	Sum	101	100.0%
11 AM	1	1.0%			
12 PM	7	6.9%			
1 PM	3	3.0%			
2 PM	11	10.9%			

Month Information

January	20	19.8%	August	5	5.0%
February	11	10.9%	September	8	7.9%
March	10	9.9%	October	3	3.0%
April	7	6.9%	November	7	6.9%
May	7	6.9%	December	4	4.0%
June	10	9.9%	Sum	101	100.0%
July	9	8.9%			

Types of Offenses

Criminal	82	81.2%
Unknown	12	11.9%
Status	6	5.9%
Non-Offense	1	1.0%
Sum	101	100.0%

Area of Detention

Non Secure Area	61	60.4%
Secure Cell/Room	40	39.6%
Sum	101	100.0%

Race

White	71	70.3%
Black	20	19.8%
Hispanic	10	9.9%
Sum	101	100.0%

Count of Sex

M	70	69.31%
F	31	30.69%
Sum	101	100.00%

North Providence

Beginning Date: 1/1/2007

Ending Date: 12/31/2007

Juvenile Detentions-

Assault Offenses

Simple Assault	31	19.6%
Robbery	4	2.5%
Felony Assault	2	1.3%
Cyberstalking	1	0.6%
Kidnapping	1	0.6%
Sum	39	24.7%

Court Violations/Warrants

Warrant/Fugitive	4	2.5%
Violation of court Order	3	1.9%
Sum	7	4.4%

Drug Offenses

Poss Marijuana	11	7.0%
Mfg/Del Unspecified Drug	2	1.3%
Mfg/Del Marijuana	1	0.6%
Sum	14	8.9%

Larceny Offenses

Shoplifting	10	6.3%
Larceny	5	3.2%
Breaking & Entry	2	1.3%
Fraud. Use of Credit Cards	1	0.6%
Poss/Rec stolen Goods	1	0.6%
Sum	19	12.0%

MV Offenses

Driving w/o License	12	7.6%
Sum	12	7.6%

Non-Offense

Missing Person	4	2.5%
Sum	4	2.5%

Sex Offenses

1st Degree Child Molestation	2	1.3%
Sum	2	1.3%

Status

Wayward/Disobedient Child	5	3.2%
Poss Alc/Minor	3	1.9%
Sum	8	5.1%

Unknown

Unknown	2	1.3%
Sum	2	1.3%

Various Disorderly Behaviors

Disorderly Conduct	34	21.5%
Vandalism	11	7.0%
Obstructing Police	2	1.3%
Bomb Threat	1	0.6%
Noise Disturbance	1	0.6%
Resisting Arrest	1	0.6%
Sum	50	31.6%

Weapons Offenses

Poss Firearm	1	0.6%
Sum	1	0.6%

North Providence

Beginning Date: 1/1/2007

Ending Date: 12/31/2007

Offenses Summary

Various Disorderly Behaviors	50	31.6%
Assault Offenses	39	24.7%
Larceny Offenses	19	12.0%
Drug Offenses	14	8.9%
MV Offenses	12	7.6%
Status	8	5.1%
Court Violations/Warrants	7	4.4%
Non-Offense	4	2.5%
Unknown	2	1.3%
Sex Offenses	2	1.3%
Weapons Offenses	1	0.6%
Sum	158	100.0%

Ages

9	1	0.6%
12	4	2.5%
13	10	6.3%
14	28	17.7%
15	41	25.9%
16	34	21.5%
17	40	25.3%
Sum	158	100.0%

Time Information

12 AM	5	3.2%	4 PM	3	1.9%
1 AM	4	2.5%	5 PM	13	8.2%
2 AM	6	3.8%	6 PM	7	4.4%
3 AM	1	0.6%	7 PM	10	6.3%
7 AM	2	1.3%	8 PM	7	4.4%
8 AM	6	3.8%	9 PM	2	1.3%
9 AM	8	5.1%	10 PM	6	3.8%
10 AM	15	9.5%	11 PM	1	0.6%
11 AM	12	7.6%	Sum	158	100.0%
12 PM	10	6.3%			
1 PM	12	7.6%			
2 PM	15	9.5%			
3 PM	13	8.2%			

Month Information

January	21	13.3%	August	4	2.5%
February	17	10.8%	September	7	4.4%
March	24	15.2%	October	15	9.5%
April	11	7.0%	November	18	11.4%
May	18	11.4%	December	4	2.5%
June	9	5.7%	Sum	158	100.0%
July	10	6.3%			

Types of Offenses

Criminal	144	91.1%
Status	8	5.1%
Non-Offense	4	2.5%
Unknown	2	1.3%
Sum	158	100.0%

Area of Detention

Non Secure Area	113	71.5%
Secure Cell/Room	45	28.5%
Sum	158	100.0%

Race

White	134	84.8%
Black	23	14.6%
Other	1	0.6%
Sum	158	100.0%

Count of Sex

M	102	64.56%
F	56	35.44%
Sum	158	100.00%

Juvenile Detentions-

Assault Offenses

Simple Assault	2	3.6%
Sum	2	3.6%

Court Violations/Warrants

Warrant/Fugitive	1	1.8%
Sum	1	1.8%

Drug Offenses

Poss Marijuana	5	8.9%
Sum	5	8.9%

Larceny Offenses

Shoplifting	9	16.1%
Larceny	7	12.5%
Breaking & Entry	2	3.6%
Fraud	1	1.8%
Sum	19	33.9%

MV Offenses

Motor Vehicle Charges	2	3.6%
Driving w/o License	2	3.6%
Driving w/ Suspended License	1	1.8%
Lv Scene Accident/Personal Injury	1	1.8%
Sum	6	10.7%

Status

Violation of Curfew (location)	2	3.6%
Tobacco Related Offense	1	1.8%
Poss Alc/Minor	1	1.8%
Sum	4	7.1%

Various Disorderly Behaviors

Vandalism	8	14.3%
Disorderly Conduct	5	8.9%
Trespassing	2	3.6%
Crank/Obs Phone Calls	1	1.8%
False 911 Call	1	1.8%
Sum	17	30.4%

Weapons Offenses

Poss Firearm	1	1.8%
Poss. Unspecified Weapon	1	1.8%
Sum	2	3.6%

North Smithfield

Beginning Date: 1/1/2007

Ending Date: 12/31/2007

Offenses Summary

Larceny Offenses	19	33.9%
Various Disorderly Behaviors	17	30.4%
MV Offenses	6	10.7%
Drug Offenses	5	8.9%
Status	4	7.1%
Weapons Offenses	2	3.6%
Assault Offenses	2	3.6%
Court Violations/Warrants	1	1.8%
Sum	56	100.0%

Ages

11	2	3.6%
12	2	3.6%
13	7	12.5%
14	7	12.5%
15	12	21.4%
16	13	23.2%
17	13	23.2%
Sum	56	100.0%

Time Information

12 AM	1	1.8%	7 PM	7	12.5%
1 AM	2	3.6%	8 PM	4	7.1%
2 AM	1	1.8%	10 PM	2	3.6%
7 AM	1	1.8%	11 PM	1	1.8%
8 AM	2	3.6%	Sum	56	100.0%
10 AM	4	7.1%			
11 AM	3	5.4%			
12 PM	2	3.6%			
1 PM	2	3.6%			
2 PM	2	3.6%			
3 PM	5	8.9%			
4 PM	12	21.4%			
5 PM	5	8.9%			

Month Information

January	2	3.6%	August	2	3.6%
February	6	10.7%	September	3	5.4%
March	9	16.1%	October	7	12.5%
April	8	14.3%	November	7	12.5%
May	2	3.6%	December	2	3.6%
June	5	8.9%	Sum	56	100.0%
July	3	5.4%			

Types of Offenses

Criminal	52	92.9%
Status	4	7.1%
Sum	56	100.0%

Area of Detention

Secure Cell/Room	54	96.4%
Non Secure Area	2	3.6%
Sum	56	100.0%

Race

White	48	85.7%
Black	6	10.7%
Asian/Pacific Island	2	3.6%
Sum	56	100.0%

Count of Sex

M	46	82.14%
F	10	17.86%
Sum	56	100.00%

Pawtucket

Beginning Date: 1/1/2007

Ending Date: 12/31/2007

Juvenile Detentions-

Assault Offenses

Simple Assault	27	7.6%
Robbery	24	6.8%
Felony Assault	20	5.7%
Assault on a Police Officer	6	1.7%
Assault	6	1.7%
Assault on a School teacher	3	0.8%
Assault w/Dang Weapon	3	0.8%
Strong Arm Robbery	1	0.3%
Sum	90	25.5%

Court Violations/Warrants

Warrant/Fugitive	13	3.7%
Violation of court Order	8	2.3%
Sum	21	5.9%

Drug Offenses

Poss Marijuana	25	7.1%
Poss unspecified narcotics	15	4.2%
Mfg/Del Marijuana	1	0.3%
Poss w/int deliver unspecified	1	0.3%
Sum	42	11.9%

Larceny Offenses

Breaking & Entry	15	4.2%
Shoplifting	10	2.8%
Larceny	8	2.3%
Poss/Rec stolen Goods	6	1.7%
Attempted B&E	2	0.6%
Sum	41	11.6%

MV Offenses

Poss Stol. MV	7	2.0%
Driving w/o License	5	1.4%
Tampering w/MV	2	0.6%
Driving w/ Suspended License	1	0.3%
Sum	15	4.2%

Non-Offense

Missing Person	1	0.3%
Sum	1	0.3%

Sex Offenses

2nd Degree Child Molestation	2	0.6%
Sexual Assault	2	0.6%
1st Degree Child Molestation	1	0.3%
Sum	5	1.4%

Status

Violation of Curfew (location)	33	9.3%
Poss Alc/Minor	2	0.6%
Sum	35	9.9%

Unknown

No Charge	2	0.6%
Investigation	1	0.3%
Sum	3	0.8%

Various Disorderly Behaviors

Disorderly Conduct	50	14.2%
Vandalism	17	4.8%
Trespassing	8	2.3%
Obstructing Police	3	0.8%
Arson - 6th Degree	2	0.6%
Loitering	2	0.6%
Possession of Spray Paint	1	0.3%
Sum	83	23.5%

Weapons Offenses

Poss Firearm	10	2.8%
Poss. Unspecified Weapon	5	1.4%
Discharging a firearm	1	0.3%
Poss Knife	1	0.3%
Sum	17	4.8%

Offenses Summary

Assault Offenses	90	25.5%
Various Disorderly Behaviors	83	23.5%
Drug Offenses	42	11.9%
Larceny Offenses	41	11.6%
Status	35	9.9%
Court Violations/Warrants	21	5.9%
Weapons Offenses	17	4.8%
MV Offenses	15	4.2%
Sex Offenses	5	1.4%
Unknown	3	0.8%
Non-Offense	1	0.3%
Sum	353	100.0%

Ages

9	2	0.6%	Sum	353	100.0%
11	3	0.8%			
12	17	4.8%			
13	49	13.9%			
14	55	15.6%			
15	74	21.0%			
16	92	26.1%			
17	61	17.3%			

Time Information

12 AM	13	3.7%	1 PM	18	5.1%
1 AM	15	4.2%	2 PM	23	6.5%
2 AM	19	5.4%	3 PM	39	11.0%
3 AM	10	2.8%	4 PM	9	2.5%
4 AM	9	2.5%	5 PM	24	6.8%
5 AM	1	0.3%	6 PM	20	5.7%
6 AM	1	0.3%	7 PM	16	4.5%
7 AM	1	0.3%	8 PM	16	4.5%
8 AM	7	2.0%	9 PM	11	3.1%
9 AM	16	4.5%	10 PM	15	4.2%
10 AM	19	5.4%	11 PM	12	3.4%
11 AM	18	5.1%	Sum	353	100.0%
12 PM	21	5.9%			

Month Information

January	20	5.7%	August	19	5.4%
February	20	5.7%	September	16	4.5%
March	32	9.1%	October	17	4.8%
April	33	9.3%	November	42	11.9%
May	55	15.6%	December	37	10.5%
June	50	14.2%	Sum	353	100.0%
July	12	3.4%			

Types of Offenses

Criminal	314	89.0%
Status	35	9.9%
Unknown	3	0.8%
Non-Offense	1	0.3%
Sum	353	100.0%

Area of Detention

Secure Cell/Room	278	78.8%
Non Secure Area	75	21.2%
Sum	353	100.0%

Race

Black	169	47.9%
White	123	34.8%
Hispanic	54	15.3%
Asian/Pacific Island	3	0.8%
Other	2	0.6%
Native American	2	0.6%
Sum	353	100.0%

Count of Sex

M	293	83.00%
F	60	17.00%
Sum	353	100.00%

Juvenile Detentions-

Drug Offenses

Poss Marijuana	5	16.7%
Sum	5	16.7%

Larceny Offenses

Larceny	3	10.0%
Attempted larceny	1	3.3%
Sum	4	13.3%

MV Offenses

Driving w/o License	2	6.7%
Sum	2	6.7%

Status

Wayward/Disobedient Child	4	13.3%
Runaway	3	10.0%
Poss Alc/Minor	1	3.3%
Truancy	1	3.3%
Sum	9	30.0%

Unknown

W/Offender	1	3.3%
Sum	1	3.3%

Various Disorderly Behaviors

Vandalism	4	13.3%
Disorderly Conduct	2	6.7%
Throwing Objects at Vehicles	2	6.7%
Crank/Obs Phone Calls	1	3.3%
Sum	9	30.0%

Portsmouth

Beginning Date: 1/1/2007

Ending Date: 12/31/2007

Offenses Summary

Various Disorderly Behaviors	9	30.0%
Status	9	30.0%
Drug Offenses	5	16.7%
Larceny Offenses	4	13.3%
MV Offenses	2	6.7%
Unknown	1	3.3%
Sum	30	100.0%

Ages

11	1	3.3%
13	2	6.7%
14	1	3.3%
15	10	33.3%
16	8	26.7%
17	8	26.7%
Sum	30	100.0%

Time Information

12 AM	2	6.7%	3 PM	2	6.7%
1 AM	2	6.7%	4 PM	3	10.0%
2 AM	2	6.7%	7 PM	1	3.3%
3 AM	1	3.3%	10 PM	1	3.3%
4 AM	1	3.3%	11 PM	2	6.7%
5 AM	1	3.3%	Sum	30	100.0%
8 AM	1	3.3%			
9 AM	1	3.3%			
10 AM	2	6.7%			
11 AM	3	10.0%			
12 PM	2	6.7%			
1 PM	2	6.7%			
2 PM	1	3.3%			

Month Information

January	1	3.3%	August	1	3.3%
February	2	6.7%	September	2	6.7%
March	3	10.0%	October	2	6.7%
April	1	3.3%	November	1	3.3%
May	7	23.3%	December	2	6.7%
June	6	20.0%	Sum	30	100.0%
July	2	6.7%			

Types of Offenses

Criminal	20	66.7%
Status	9	30.0%
Unknown	1	3.3%
Sum	30	100.0%

Area of Detention

Non Secure Area	29	96.7%
Secure Cell/Room	1	3.3%
Sum	30	100.0%

Race

White	27	90.0%
Black	3	10.0%
Sum	30	100.0%

Count of Sex

M	17	56.67%
F	13	43.33%
Sum	30	100.00%

Providence

Beginning Date: 1/1/2007

Ending Date: 12/31/2007

Juvenile Detentions-

Assault Offenses

Simple Assault	147	11.3%
Robbery	66	5.1%
Felony Assault	10	0.8%
Assault	10	0.8%
Assault w/Dang Weapon	6	0.5%
Assault on a Police Officer	4	0.3%
Strong Arm Robbery	3	0.2%
Attempted Robbery	2	0.2%
Intimidating Witness	1	0.1%
Threats	1	0.1%
Domestic Assault	1	0.1%
Sum	251	19.2%

Court Violations/Warrants

Warrant/Fugitive	90	6.9%
Viol of Home conf	5	0.4%
Sum	95	7.3%

Drug Offenses

Poss unspecified narcotics	92	7.0%
Poss Marijuana	19	1.5%
Poss Cocaine	2	0.2%
Mfg/Del Cocaine	1	0.1%
Sum	114	8.7%

Larceny Offenses

Shoplifting	112	8.6%
Breaking & Entry	46	3.5%
Larceny	45	3.4%
Attempted B&E	4	0.3%
Fraud	3	0.2%
Poss/Rec stolen Goods	2	0.2%
Attempted larceny	1	0.1%
Sum	213	16.3%

MV Offenses

Driving w/o License	52	4.0%
Poss Stol. MV	51	3.9%
Driving under Influence/Driving while Intoxicated	2	0.2%
Tampering w/MV	2	0.2%
Sum	107	8.2%

Sex Offenses

Sexual Assault	7	0.5%
1st Degree Child Molestation	1	0.1%
Sum	8	0.6%

Status

Poss Alc/Minor	1	0.1%
Sum	1	0.1%

Unknown

Investigation	13	1.0%
Unknown	1	0.1%
Sum	14	1.1%

Various Disorderly Behaviors

Disorderly Conduct	312	23.9%
Malicious damage	42	3.2%
Trespassing	21	1.6%
Loitering	21	1.6%
Malicious Mischief	20	1.5%
Graffiti	5	0.4%
Obstructing Police	5	0.4%
Arson	4	0.3%
False Fire Alarm	2	0.2%
Escapee	2	0.2%
Possession of Spray Paint	2	0.2%
Resisting Arrest	1	0.1%
Bomb Threat	1	0.1%
Conspiracy	1	0.1%
Escape RITSY	1	0.1%
Sum	440	33.7%

Weapons Offenses

Poss. Unspecified Weapon	21	1.6%
Poss Knife	17	1.3%
Poss Firearm	14	1.1%
Poss BB Gun	9	0.7%
Possession Weapon/School	1	0.1%
Sum	62	4.8%

Providence

Beginning Date: 1/1/2007

Ending Date: 12/31/2007

Offenses Summary

Various Disorderly Behaviors	440	33.7%
Assault Offenses	251	19.2%
Larceny Offenses	213	16.3%
Drug Offenses	114	8.7%
MV Offenses	107	8.2%
Court Violations/Warrants	95	7.3%
Weapons Offenses	62	4.8%
Unknown	14	1.1%
Sex Offenses	8	0.6%
Status	1	0.1%
Sum	1305	100.0%

Types of Offenses

Criminal	1290	98.9%
Unknown	14	1.1%
Status	1	0.1%
Sum	1305	100.0%

Area of Detention

Secure Cell/Room	1282	98.2%
Non Secure Area	23	1.8%
Sum	1305	100.0%

Ages

Not Reported	1	0.1%	15	321	24.6%
8	2	0.2%	16	352	27.0%
9	1	0.1%	17	264	20.2%
10	4	0.3%	Sum	1305	100.0%
11	22	1.7%			
12	39	3.0%			
13	102	7.8%			
14	197	15.1%			

Race

Black	567	43.4%
Hispanic	473	36.2%
White	210	16.1%
Asian/Pacific Island	46	3.5%
Native American	8	0.6%
Not Reported	1	0.1%
Sum	1305	100.0%

Time Information

12 AM	20	1.5%	1 PM	72	5.5%
1 AM	19	1.5%	2 PM	71	5.4%
2 AM	12	0.9%	3 PM	84	6.4%
3 AM	7	0.5%	4 PM	123	9.4%
4 AM	6	0.5%	5 PM	124	9.5%
5 AM	6	0.5%	6 PM	87	6.7%
6 AM	1	0.1%	7 PM	86	6.6%
7 AM	5	0.4%	8 PM	85	6.5%
8 AM	21	1.6%	9 PM	99	7.6%
9 AM	46	3.5%	10 PM	66	5.1%
10 AM	73	5.6%	11 PM	32	2.5%
11 AM	86	6.6%	Sum	1305	100.0%
12 PM	74	5.7%			

Count of Sex

M	926	70.96%
F	376	28.81%
Not Reported	3	0.23%
Sum	1305	100.00%

Month Information

January	126	9.7%	August	84	6.4%
February	88	6.7%	September	80	6.1%
March	134	10.3%	October	121	9.3%
April	91	7.0%	November	107	8.2%
May	150	11.5%	December	110	8.4%
June	131	10.0%	Sum	1305	100.0%
July	83	6.4%			

RI Airport Police

Beginning Date: 1/1/2007

Ending Date: 12/31/2007

Juvenile Detentions-

Court Violations/Warrants

Warrant/Fugitive	1	50.0%
Sum	1	50.0%

Status

Runaway	1	50.0%
Sum	1	50.0%

RI Airport Police

Beginning Date: 1/1/2007

Ending Date: 12/31/2007

Offenses Summary

Status	1	50.0%
Court Violations/Warrants	1	50.0%
Sum	2	100.0%

Ages

16	1	50.0%
17	1	50.0%
Sum	2	100.0%

Time Information

12 PM	1	50.0%
8 PM	1	50.0%
Sum	2	100.0%

Month Information

June	1	50.0%
July	1	50.0%
Sum	2	100.0%

Types of Offenses

Status	1	50.0%
Criminal	1	50.0%
Sum	2	100.0%

Area of Detention

Non Secure Area	2	100.0%
Sum	2	100.0%

Race

White	1	50.0%
Black	1	50.0%
Sum	2	100.0%

Count of Sex

M	1	50.00%
F	1	50.00%
Sum	2	100.00%

Juvenile Detentions-

Assault Offenses

Simple Assault	8	18.2%
Robbery	1	2.3%
Sum	9	20.5%

Drug Offenses

Poss Marijuana	5	11.4%
Sum	5	11.4%

Larceny Offenses

Larceny	1	2.3%
Poss/Rec stolen Goods	1	2.3%
Sum	2	4.5%

MV Offenses

Driving w/ Suspended License	1	2.3%
Driving w/o License	1	2.3%
Sum	2	4.5%

Status

Poss Alc/Minor	3	6.8%
Sum	3	6.8%

Various Disorderly Behaviors

Disorderly Conduct	19	43.2%
Vandalism	1	2.3%
Escapee	1	2.3%
Noise Disturbance	1	2.3%
Trespassing	1	2.3%
Sum	23	52.3%

Offenses Summary

Various Disorderly Behaviors	23	52.3%
Assault Offenses	9	20.5%
Drug Offenses	5	11.4%
Status	3	6.8%
MV Offenses	2	4.5%
Larceny Offenses	2	4.5%
Sum	44	100.0%

Ages

14	9	20.5%
15	9	20.5%
16	14	31.8%
17	12	27.3%
Sum	44	100.0%

Time Information

1 AM	3	6.8%	7 PM	3	6.8%
2 AM	2	4.5%	8 PM	1	2.3%
8 AM	6	13.6%	Sum	44	100.0%
9 AM	3	6.8%			
10 AM	9	20.5%			
11 AM	2	4.5%			
12 PM	2	4.5%			
1 PM	2	4.5%			
2 PM	6	13.6%			
3 PM	1	2.3%			
4 PM	1	2.3%			
5 PM	2	4.5%			
6 PM	1	2.3%			

Month Information

January	4	9.1%	October	2	4.5%
February	3	6.8%	November	3	6.8%
March	10	22.7%	December	7	15.9%
April	7	15.9%	Sum	44	100.0%
May	4	9.1%			
June	2	4.5%			
August	2	4.5%			

Types of Offenses

Criminal	41	93.2%
Status	3	6.8%
Sum	44	100.0%

Area of Detention

Non Secure Area	44	100.0%
Sum	44	100.0%

Race

White	37	84.1%
Black	4	9.1%
Native American	2	4.5%
Asian/Pacific Island	1	2.3%
Sum	44	100.0%

Count of Sex

M	36	81.82%
F	8	18.18%
Sum	44	100.00%

Juvenile Detentions-

Assault Offenses

Simple Assault	3	18.8%
Assault on a Police Officer	1	6.3%
Sum	4	25.0%

Drug Offenses

Poss Marijuana	1	6.3%
Sum	1	6.3%

MV Offenses

Driving w/o License	1	6.3%
Sum	1	6.3%

Non-Offense

Missing Person	1	6.3%
Sum	1	6.3%

Various Disorderly Behaviors

Disorderly Conduct	4	25.0%
Vandalism	3	18.8%
Poss Fireworks	2	12.5%
Sum	9	56.3%

Scituate

Beginning Date: 1/1/2007

Ending Date: 12/31/2007

Offenses Summary

Various Disorderly Behaviors	9	56.3%
Assault Offenses	4	25.0%
Non-Offense	1	6.3%
MV Offenses	1	6.3%
Drug Offenses	1	6.3%
Sum	16	100.0%

Ages

13	1	6.3%
14	4	25.0%
15	4	25.0%
16	4	25.0%
17	3	18.8%
Sum	16	100.0%

Time Information

12 AM	3	18.8%
2 AM	1	6.3%
8 AM	2	12.5%
9 AM	1	6.3%
12 PM	1	6.3%
1 PM	1	6.3%
2 PM	2	12.5%
3 PM	1	6.3%
4 PM	1	6.3%
11 PM	3	18.8%
Sum	16	100.0%

Month Information

January	1	6.3%	November	1	6.3%
February	1	6.3%	December	2	12.5%
April	2	12.5%	Sum	16	100.0%
May	1	6.3%			
July	5	31.3%			
August	1	6.3%			
October	2	12.5%			

Types of Offenses

Criminal	15	93.8%
Non-Offense	1	6.3%
Sum	16	100.0%

Area of Detention

Non Secure Area	16	100.0%
Sum	16	100.0%

Race

White	16	100.0%
Sum	16	100.0%

Count of Sex

M	14	87.50%
Not Reported	1	6.25%
F	1	6.25%
Sum	16	100.00%

Juvenile Detentions-

Assault Offenses

Simple Assault	8	8.8%
Sum	8	8.8%

Drug Offenses

Poss Marijuana	14	15.4%
Poss Cocaine	2	2.2%
Sum	16	17.6%

Larceny Offenses

Shoplifting	14	15.4%
Larceny	7	7.7%
Poss/Rec stolen Goods	1	1.1%
Sum	22	24.2%

MV Offenses

Driving w/o License	3	3.3%
Driving w/ Suspended License	2	2.2%
Reckless Driving	1	1.1%
Sum	6	6.6%

Non-Offense

Missing Person	1	1.1%
Sum	1	1.1%

Status

Poss Alc/Minor	10	11.0%
Sum	10	11.0%

Unknown

Susp. Person	4	4.4%
W/Offender	2	2.2%
No Charge	1	1.1%
Sum	7	7.7%

Various Disorderly Behaviors

Disorderly Conduct	14	15.4%
Arson	3	3.3%
Bomb Threat	2	2.2%
Malicious damage	1	1.1%
Crank/Obs Phone Calls	1	1.1%
Sum	21	23.1%

Offenses Summary

Larceny Offenses	22	24.2%
Various Disorderly Behaviors	21	23.1%
Drug Offenses	16	17.6%
Status	10	11.0%
Assault Offenses	8	8.8%
Unknown	7	7.7%
MV Offenses	6	6.6%
Non-Offense	1	1.1%
Sum	91	100.0%

Ages

12	2	2.2%
13	3	3.3%
14	6	6.6%
15	22	24.2%
16	27	29.7%
17	31	34.1%
Sum	91	100.0%

Time Information

12 AM	2	2.2%	6 PM	2	2.2%
1 AM	7	7.7%	7 PM	8	8.8%
2 AM	1	1.1%	8 PM	9	9.9%
8 AM	2	2.2%	9 PM	6	6.6%
9 AM	2	2.2%	10 PM	10	11.0%
10 AM	2	2.2%	11 PM	4	4.4%
11 AM	3	3.3%	Sum	91	100.0%
12 PM	2	2.2%			
1 PM	6	6.6%			
2 PM	11	12.1%			
3 PM	4	4.4%			
4 PM	4	4.4%			
5 PM	6	6.6%			

Month Information

January	3	3.3%	August	3	3.3%
February	8	8.8%	September	5	5.5%
March	13	14.3%	October	1	1.1%
April	9	9.9%	November	5	5.5%
May	16	17.6%	December	10	11.0%
June	6	6.6%	Sum	91	100.0%
July	12	13.2%			

Types of Offenses

Criminal	73	80.2%
Status	10	11.0%
Unknown	7	7.7%
Non-Offense	1	1.1%
Sum	91	100.0%

Area of Detention

Non Secure Area	56	61.5%
Secure Cell/Room	35	38.5%
Sum	91	100.0%

Race

White	89	97.8%
Hispanic	1	1.1%
Black	1	1.1%
Sum	91	100.0%

Count of Sex

M	52	57.14%
F	39	42.86%
Sum	91	100.00%

Juvenile Detentions-

Assault Offenses

Simple Assault	7	18.9%
Assault on a School teacher	2	5.4%
Assault	1	2.7%
Assault w/Dang Weapon	1	2.7%
Sum	11	29.7%

Court Violations/Warrants

Violation of court Order	2	5.4%
Sum	2	5.4%

Drug Offenses

Poss Marijuana	6	16.2%
Poss w/int deliver unspecified	1	2.7%
Sum	7	18.9%

Larceny Offenses

Breaking & Entry	8	21.6%
Larceny	1	2.7%
Sum	9	24.3%

MV Offenses

Driving under Influence/Driving while Intoxicated	1	2.7%
Sum	1	2.7%

Various Disorderly Behaviors

Malicious Mischief	2	5.4%
Disorderly Conduct	2	5.4%
Malicious damage	2	5.4%
Throwing Objects at Vehicles	1	2.7%
Sum	7	18.9%

South Kingstown

Beginning Date: 1/1/2007

Ending Date: 12/31/2007

Offenses Summary

Assault Offenses	11	29.7%
Larceny Offenses	9	24.3%
Various Disorderly Behaviors	7	18.9%
Drug Offenses	7	18.9%
Court Violations/Warrants	2	5.4%
MV Offenses	1	2.7%
Sum	37	100.0%

Ages

13	2	5.4%
14	7	18.9%
15	11	29.7%
16	11	29.7%
17	6	16.2%
Sum	37	100.0%

Time Information

1 AM	1	2.7%	9 PM	1	2.7%
3 AM	1	2.7%	10 PM	1	2.7%
7 AM	2	5.4%	Sum	37	100.0%
9 AM	1	2.7%			
10 AM	6	16.2%			
11 AM	1	2.7%			
12 PM	6	16.2%			
1 PM	1	2.7%			
2 PM	5	13.5%			
3 PM	5	13.5%			
5 PM	3	8.1%			
6 PM	1	2.7%			
8 PM	2	5.4%			

Month Information

January	4	10.8%	August	3	8.1%
February	1	2.7%	November	2	5.4%
March	9	24.3%	December	3	8.1%
April	2	5.4%	Sum	37	100.0%
May	7	18.9%			
June	2	5.4%			
July	4	10.8%			

Types of Offenses

Criminal	37	100.0%
Sum	37	100.0%

Area of Detention

Secure Cell/Room	37	100.0%
Sum	37	100.0%

Race

White	26	70.3%
Black	10	27.0%
Hispanic	1	2.7%
Sum	37	100.0%

Count of Sex

M	29	78.38%
F	8	21.62%
Sum	37	100.00%

State Police Chepachet

Beginning Date: 1/1/2007

Ending Date: 12/31/2007

Juvenile Detentions-

Drug Offenses

Poss Marijuana	1	20.0%
Sum	1	20.0%

MV Offenses

Driving under Influence/Driving while Intoxicated	1	20.0%
Poss Stol. MV	1	20.0%
Sum	2	40.0%

Various Disorderly Behaviors

Throwing Objects at Vehicles	2	40.0%
Sum	2	40.0%

State Police Chepachet

Beginning Date: 1/1/2007

Ending Date: 12/31/2007

Offenses Summary

Various Disorderly Behaviors	2	40.0%
MV Offenses	2	40.0%
Drug Offenses	1	20.0%
Sum	5	100.0%

Ages

11	2	40.0%
17	3	60.0%
Sum	5	100.0%

Time Information

2 PM	1	20.0%
6 PM	2	40.0%
11 PM	2	40.0%
Sum	5	100.0%

Month Information

February	1	20.0%
June	2	40.0%
July	1	20.0%
December	1	20.0%
Sum	5	100.0%

Types of Offenses

Criminal	5	100.0%
Sum	5	100.0%

Area of Detention

Non Secure Area	3	60.0%
Secure Cell/Room	2	40.0%
Sum	5	100.0%

Race

White	4	80.0%
Black	1	20.0%
Sum	5	100.0%

Count of Sex

M	5	100.00%
Sum	5	100.00%

State Police Headquarters

Beginning Date: 1/1/2007

Ending Date: 12/31/2007

Juvenile Detentions-

Assault Offenses

Assault	3	16.7%
Simple Assault	3	16.7%
Sum	6	33.3%

Court Violations/Warrants

Warrant/Fugitive	1	5.6%
Sum	1	5.6%

Drug Offenses

Poss Cocaine	1	5.6%
Poss Marijuana	1	5.6%
Sum	2	11.1%

Larceny Offenses

Breaking & Entry	1	5.6%
OMUFP- Obtaining \$ under false pretenses	1	5.6%
Sum	2	11.1%

Various Disorderly Behaviors

Escapee	7	38.9%
Sum	7	38.9%

State Police Headquarters

Beginning Date: 1/1/2007

Ending Date: 12/31/2007

Offenses Summary

Various Disorderly Behaviors	7	38.9%
Assault Offenses	6	33.3%
Larceny Offenses	2	11.1%
Drug Offenses	2	11.1%
Court Violations/Warrants	1	5.6%
Sum	18	100.0%

Ages

14	2	11.1%
15	2	11.1%
16	7	38.9%
17	7	38.9%
Sum	18	100.0%

Time Information

9 AM	9	50.0%
10 AM	2	11.1%
12 PM	2	11.1%
1 PM	3	16.7%
2 PM	1	5.6%
4 PM	1	5.6%
Sum	18	100.0%

Month Information

February	3	16.7%	November	1	5.6%
March	5	27.8%	December	2	11.1%
April	2	11.1%	Sum	18	100.0%
July	2	11.1%			
August	1	5.6%			
September	1	5.6%			
October	1	5.6%			

Types of Offenses

Criminal	18	100.0%
Sum	18	100.0%

Area of Detention

Secure Cell/Room	18	100.0%
Sum	18	100.0%

Race

White	11	61.1%
Black	6	33.3%
Hispanic	1	5.6%
Sum	18	100.0%

Count of Sex

M	16	88.89%
F	2	11.11%
Sum	18	100.00%

State Police Hope Valley

Beginning Date: 1/1/2007

Ending Date: 12/31/2007

Juvenile Detentions-

Assault Offenses

Simple Assault	1	4.2%
Sum	1	4.2%

Drug Offenses

Poss Marijuana	2	8.3%
Sum	2	8.3%

Larceny Offenses

Breaking & Entry	4	16.7%
Sum	4	16.7%

MV Offenses

Driving w/o License	4	16.7%
Sum	4	16.7%

Sex Offenses

1st Degree Child Molestation	1	4.2%
Sum	1	4.2%

Various Disorderly Behaviors

Disorderly Conduct	5	20.8%
Malicious damage	4	16.7%
Vandalism	2	8.3%
False Fire Alarm	1	4.2%
Sum	12	50.0%

State Police Hope Valley

Beginning Date: 1/1/2007

Ending Date: 12/31/2007

Offenses Summary

Various Disorderly Behaviors	12	50.0%
MV Offenses	4	16.7%
Larceny Offenses	4	16.7%
Drug Offenses	2	8.3%
Sex Offenses	1	4.2%
Assault Offenses	1	4.2%
Sum	24	100.0%

Ages

12	1	4.2%
14	3	12.5%
15	1	4.2%
16	8	33.3%
17	11	45.8%
Sum	24	100.0%

Time Information

12 AM	3	12.5%
2 AM	2	8.3%
10 AM	2	8.3%
11 AM	2	8.3%
1 PM	1	4.2%
2 PM	1	4.2%
4 PM	4	16.7%
6 PM	4	16.7%
8 PM	1	4.2%
9 PM	1	4.2%
10 PM	2	8.3%
11 PM	1	4.2%
Sum	24	100.0%

Month Information

January	4	16.7%	December	3	12.5%
February	2	8.3%	Sum	24	100.0%
April	2	8.3%			
May	6	25.0%			
June	3	12.5%			
July	3	12.5%			
September	1	4.2%			

Types of Offenses

Criminal	24	100.0%
Sum	24	100.0%

Area of Detention

Non Secure Area	24	100.0%
Sum	24	100.0%

Race

White	18	75.0%
Black	5	20.8%
Hispanic	1	4.2%
Sum	24	100.0%

Count of Sex

M	17	70.83%
F	7	29.17%
Sum	24	100.00%

State Police Lincoln

Beginning Date: 1/1/2007

Ending Date: 12/31/2007

Juvenile Detentions-

Assault Offenses

Simple Assault	2	12.5%
Sum	2	12.5%

Court Violations/Warrants

Warrant/Fugitive	1	6.3%
Sum	1	6.3%

Drug Offenses

Poss Marijuana	2	12.5%
Sum	2	12.5%

MV Offenses

Poss Stol. MV	3	18.8%
Driving w/o License	2	12.5%
Dr w/o Consent Owner	1	6.3%
Sum	6	37.5%

Various Disorderly Behaviors

Escapee	3	18.8%
Disorderly Conduct	1	6.3%
Resisting Arrest	1	6.3%
Sum	5	31.3%

State Police Lincoln

Beginning Date: 1/1/2007

Ending Date: 12/31/2007

Offenses Summary

MV Offenses	6	37.5%
Various Disorderly Behaviors	5	31.3%
Drug Offenses	2	12.5%
Assault Offenses	2	12.5%
Court Violations/Warrants	1	6.3%
Sum	16	100.0%

Ages

14	3	18.8%
15	2	12.5%
16	3	18.8%
17	8	50.0%
Sum	16	100.0%

Time Information

12 AM	1	6.3%
1 AM	1	6.3%
2 AM	1	6.3%
4 AM	1	6.3%
8 AM	1	6.3%
11 AM	1	6.3%
1 PM	2	12.5%
2 PM	1	6.3%
4 PM	3	18.8%
8 PM	1	6.3%
9 PM	2	12.5%
11 PM	1	6.3%
Sum	16	100.0%

Month Information

January	3	18.8%	October	1	6.3%
February	1	6.3%	Sum	16	100.0%
May	1	6.3%			
June	4	25.0%			
July	1	6.3%			
August	4	25.0%			
September	1	6.3%			

Types of Offenses

Criminal	16	100.0%
Sum	16	100.0%

Area of Detention

Secure Cell/Room	16	100.0%
Sum	16	100.0%

Race

White	8	50.0%
Black	4	25.0%
Hispanic	3	18.8%
Asian/Pacific Island	1	6.3%
Sum	16	100.0%

Count of Sex

M	11	68.75%
F	5	31.25%
Sum	16	100.0%

State Police Portsmouth

Beginning Date: 1/1/2007

Ending Date: 12/31/2007

Juvenile Detentions-

Assault Offenses

Domestic Assault	1	33.3%
Sum	1	33.3%

Drug Offenses

Poss unspecified narcotics	1	33.3%
Sum	1	33.3%

MV Offenses

Dr/to endanger personal injury resulting	1	33.3%
Sum	1	33.3%

State Police Portsmouth

Beginning Date: 1/1/2007

Ending Date: 12/31/2007

Offenses Summary

MV Offenses	1	33.3%
Drug Offenses	1	33.3%
Assault Offenses	1	33.3%
Sum	3	100.0%

Ages

16	1	33.3%
17	2	66.7%
Sum	3	100.0%

Area of Detention

Secure Cell/Room	3	100.0%
Sum	3	100.0%

Race

White	2	66.7%
Hispanic	1	33.3%
Sum	3	100.0%

Count of Sex

M	3	100.00%
Sum	3	100.00%

Time Information

12 PM	2	66.7%
9 PM	1	33.3%
Sum	3	100.0%

Month Information

July	1	33.3%
October	1	33.3%
December	1	33.3%
Sum	3	100.0%

Types of Offenses

Criminal	3	100.0%
Sum	3	100.0%

State Police Wickford

Beginning Date: 1/1/2007

Ending Date: 12/31/2007

Juvenile Detentions-

Drug Offenses

Poss Marijuana	1	8.3%
Sum	1	8.3%

Larceny Offenses

Poss Burglary Tools	1	8.3%
Sum	1	8.3%

MV Offenses

Poss Stol. MV	2	16.7%
Driving under Influence/Driving while Intoxicated	1	8.3%
Driving w/o License	1	8.3%
Sum	4	33.3%

Status

Poss Alc/Minor	4	33.3%
Sum	4	33.3%

Various Disorderly Behaviors

Escapee	1	8.3%
Sum	1	8.3%

Weapons Offenses

Possession of ammunition	1	8.3%
Sum	1	8.3%

State Police Wickford

Beginning Date: 1/1/2007

Ending Date: 12/31/2007

Offenses Summary

Status	4	33.3%
MV Offenses	4	33.3%
Weapons Offenses	1	8.3%
Various Disorderly Behaviors	1	8.3%
Larceny Offenses	1	8.3%
Drug Offenses	1	8.3%
Sum	12	100.0%

Ages

16	5	41.7%
17	6	50.0%
18	1	8.3%
Sum	12	100.0%

Time Information

12 AM	1	8.3%
3 AM	1	8.3%
4 AM	1	8.3%
10 AM	4	33.3%
2 PM	2	16.7%
9 PM	2	16.7%
10 PM	1	8.3%
Sum	12	100.0%

Month Information

January	2	16.7%
April	1	8.3%
May	1	8.3%
June	6	50.0%
August	1	8.3%
September	1	8.3%
Sum	12	100.0%

Types of Offenses

Criminal	8	66.7%
Status	4	33.3%
Sum	12	100.0%

Area of Detention

Secure Cell/Room	11	91.7%
Non Secure Area	1	8.3%
Sum	12	100.0%

Race

White	7	58.3%
Black	3	25.0%
Hispanic	2	16.7%
Sum	12	100.0%

Count of Sex

M	10	83.33%
F	2	16.67%
Sum	12	100.00%

Juvenile Detentions-

Assault Offenses

Simple Assault	9	11.8%
Felony Assault	1	1.3%
Sum	10	13.2%

Court Violations/Warrants

Violation of court Order	2	2.6%
Sum	2	2.6%

Drug Offenses

Poss Marijuana	8	10.5%
Sum	8	10.5%

Larceny Offenses

Larceny	6	7.9%
Breaking & Entry	2	2.6%
Sum	8	10.5%

MV Offenses

Poss Stol. MV	5	6.6%
Driving w/o License	4	5.3%
Sum	9	11.8%

Non-Offense

Missing Person	5	6.6%
Sum	5	6.6%

Status

Poss Alc/Minor	1	1.3%
Sum	1	1.3%

Unknown

Unknown	2	2.6%
Sum	2	2.6%

Various Disorderly Behaviors

Disorderly Conduct	18	23.7%
Vandalism	6	7.9%
Obstructing Police	3	3.9%
Family Offenses (unknown specific)	1	1.3%
Throwing Objects at Vehicles	1	1.3%
Sum	29	38.2%

Weapons Offenses

Poss. Unspecified Weapon	2	2.6%
Sum	2	2.6%

Offenses Summary

Various Disorderly Behaviors	29	38.2%
Assault Offenses	10	13.2%
MV Offenses	9	11.8%
Larceny Offenses	8	10.5%
Drug Offenses	8	10.5%
Non-Offense	5	6.6%
Weapons Offenses	2	2.6%
Unknown	2	2.6%
Court Violations/Warrants	2	2.6%
Status	1	1.3%
Sum	76	100.0%

Ages

12	2	2.6%
13	5	6.6%
14	14	18.4%
15	11	14.5%
16	18	23.7%
17	26	34.2%
Sum	76	100.0%

Time Information

12 AM	1	1.3%	6 PM	6	7.9%
2 AM	2	2.6%	7 PM	1	1.3%
5 AM	3	3.9%	8 PM	2	2.6%
7 AM	2	2.6%	9 PM	6	7.9%
8 AM	2	2.6%	10 PM	4	5.3%
9 AM	3	3.9%	11 PM	2	2.6%
10 AM	2	2.6%	Sum	76	100.0%
11 AM	6	7.9%			
12 PM	5	6.6%			
1 PM	13	17.1%			
2 PM	5	6.6%			
4 PM	3	3.9%			
5 PM	8	10.5%			

Month Information

January	6	7.9%	August	6	7.9%
February	9	11.8%	September	8	10.5%
March	6	7.9%	October	6	7.9%
April	11	14.5%	November	6	7.9%
May	4	5.3%	December	4	5.3%
June	9	11.8%	Sum	76	100.0%
July	1	1.3%			

Types of Offenses

Criminal	68	89.5%
Non-Offense	5	6.6%
Unknown	2	2.6%
Status	1	1.3%
Sum	76	100.0%

Area of Detention

Secure Cell/Room	69	90.8%
Non Secure Area	7	9.2%
Sum	76	100.0%

Race

White	75	98.7%
Black	1	1.3%
Sum	76	100.0%

Count of Sex

M	55	72.37%
F	21	27.63%
Sum	76	100.00%

Juvenile Detentions-

Various Disorderly Behaviors

Disorderly Conduct	1	100.0%
Sum	1	100.0%

Offenses Summary

Various Disorderly Behaviors	1	100.0%
Sum	1	100.0%

Area of Detention

Non Secure Area	1	100.0%
Sum	1	100.0%

Ages

17	1	100.0%
Sum	1	100.0%

Race

White	1	100.0%
Sum	1	100.0%

Count of Sex

M	1	100.00%
Sum	1	100.00%

Time Information

1 AM	1	100.0%
Sum	1	100.0%

Month Information

March	1	100.0%
Sum	1	100.0%

Types of Offenses

Criminal	1	100.0%
Sum	1	100.0%

Juvenile Detentions-**Assault Offenses**

Simple Assault	6	17.6%
Domestic Assault	1	2.9%
Sum	7	20.6%

Court Violations/Warrants

Violation of court Order	1	2.9%
Warrant/Fugitive	1	2.9%
Sum	2	5.9%

Drug Offenses

Poss Marijuana	5	14.7%
Sum	5	14.7%

Larceny Offenses

Breaking & Entry	2	5.9%
Larceny	1	2.9%
Sum	3	8.8%

MV Offenses

Driving w/o License	1	2.9%
Sum	1	2.9%

Non-Offense

Refusing Breathalyzer	1	2.9%
Sum	1	2.9%

Sex Offenses

1st Degree Child Molestation	1	2.9%
Sum	1	2.9%

Status

Poss Alc/Minor	2	5.9%
Sum	2	5.9%

Various Disorderly Behaviors

Disorderly Conduct	6	17.6%
Malicious damage	4	11.8%
Crank/Obs Phone Calls	1	2.9%
Trespassing	1	2.9%
Sum	12	35.3%

Warren

Beginning Date: 1/1/2007

Ending Date: 12/31/2007

Offenses Summary

Various Disorderly Behaviors	12	35.3%
Assault Offenses	7	20.6%
Drug Offenses	5	14.7%
Larceny Offenses	3	8.8%
Status	2	5.9%
Court Violations/Warrants	2	5.9%
Sex Offenses	1	2.9%
Non-Offense	1	2.9%
MV Offenses	1	2.9%
Sum	34	100.0%

Ages

12	1	2.9%
13	1	2.9%
14	1	2.9%
15	11	32.4%
16	8	23.5%
17	12	35.3%
Sum	34	100.0%

Time Information

12 AM	4	11.8%	Sum	34	100.0%
3 AM	1	2.9%			
8 AM	1	2.9%			
10 AM	1	2.9%			
12 PM	2	5.9%			
1 PM	4	11.8%			
4 PM	4	11.8%			
6 PM	4	11.8%			
7 PM	4	11.8%			
8 PM	3	8.8%			
9 PM	4	11.8%			
10 PM	1	2.9%			
11 PM	1	2.9%			

Month Information

January	2	5.9%	August	4	11.8%
February	4	11.8%	September	2	5.9%
March	5	14.7%	October	3	8.8%
April	1	2.9%	November	1	2.9%
May	3	8.8%	December	2	5.9%
June	3	8.8%	Sum	34	100.0%
July	4	11.8%			

Types of Offenses

Criminal	31	91.2%
Status	2	5.9%
Non-Offense	1	2.9%
Sum	34	100.0%

Area of Detention

Secure Cell/Room	23	67.6%
Non Secure Area	11	32.4%
Sum	34	100.0%

Race

White	31	91.2%
Black	3	8.8%
Sum	34	100.0%

Count of Sex

M	26	76.47%
F	7	20.59%
Not Reported	1	2.94%
Sum	34	100.00%

Juvenile Detentions-

Assault Offenses

Simple Assault	43	7.2%
Assault w/Dang Weapon	5	0.8%
Domestic Assault	5	0.8%
Threats	3	0.5%
Felony Assault	2	0.3%
Intimidating Witness	1	0.2%
Assault	1	0.2%
Sum	60	10.1%

Court Violations/Warrants

Warrant/Fugitive	9	1.5%
Viol of Home conf	5	0.8%
Sum	14	2.3%

Drug Offenses

Poss Marijuana	32	5.4%
Poss unspecified narcotics	2	0.3%
Mfg/Del Marijuana	1	0.2%
Mfg/Del Unspecified Drug	1	0.2%
Sum	36	6.0%

Larceny Offenses

Shoplifting	309	51.8%
Larceny	18	3.0%
Breaking & Entry	9	1.5%
Poss/Rec stolen Goods	4	0.7%
Counterfeiting/Passing Counterfeit Instrument	1	0.2%
Attempted B&E	1	0.2%
Fraud	1	0.2%
Embezzlement	1	0.2%
Sum	344	57.7%

MV Offenses

Driving w/o License	19	3.2%
Operating MV w/o Consent	7	1.2%
Driving under Influence/Driving while Intoxicated	1	0.2%
Reckless Driving	1	0.2%
Sum	28	4.7%

Non-Offense

Missing Person	2	0.3%
Refusing Breathalyzer	1	0.2%
Sum	3	0.5%

Sex Offenses

1st Degree Child Molestation	2	0.3%
Sum	2	0.3%

Status

Truancy	2	0.3%
Poss Alc/Minor	2	0.3%
Runaway	1	0.2%
Sum	5	0.8%

Unknown

Investigation	3	0.5%
Unknown	1	0.2%
Sum	4	0.7%

Various Disorderly Behaviors

Disorderly Conduct	37	6.2%
Malicious damage	30	5.0%
Trespassing	9	1.5%
Obstructing Police	8	1.3%
Arson - 6th Degree	3	0.5%
Conspiracy	3	0.5%
Crank/Obs Phone Calls	2	0.3%
Arson - 5th Degree	2	0.3%
Drunkenness	1	0.2%
False Fire Alarm	1	0.2%
Resisting Arrest	1	0.2%
Sum	97	16.3%

Weapons Offenses

Poss. Unspecified Weapon	2	0.3%
Possession of a Dangerous Weapon	1	0.2%
Sum	3	0.5%

Offenses Summary

Larceny Offenses	344	57.7%
Various Disorderly Behaviors	97	16.3%
Assault Offenses	60	10.1%
Drug Offenses	36	6.0%
MV Offenses	28	4.7%
Court Violations/Warrants	14	2.3%
Status	5	0.8%
Unknown	4	0.7%
Weapons Offenses	3	0.5%
Non-Offense	3	0.5%
Sex Offenses	2	0.3%
Sum	596	100.0%

Ages

8	1	0.2%	17	128	21.5%
9	1	0.2%	Sum	596	100.0%
11	7	1.2%			
12	23	3.9%			
13	42	7.0%			
14	90	15.1%			
15	124	20.8%			
16	180	30.2%			

Time Information

12 AM	9	1.5%	2 PM	32	5.4%
1 AM	13	2.2%	3 PM	36	6.0%
2 AM	5	0.8%	4 PM	36	6.0%
3 AM	5	0.8%	5 PM	60	10.1%
4 AM	1	0.2%	6 PM	63	10.6%
5 AM	2	0.3%	7 PM	41	6.9%
7 AM	1	0.2%	8 PM	73	12.2%
8 AM	9	1.5%	9 PM	46	7.7%
9 AM	25	4.2%	10 PM	49	8.2%
10 AM	15	2.5%	11 PM	9	1.5%
11 AM	7	1.2%	Sum	596	100.0%
12 PM	20	3.4%			
1 PM	39	6.5%			

Month Information

January	67	11.2%	August	38	6.4%
February	58	9.7%	September	23	3.9%
March	54	9.1%	October	54	9.1%
April	70	11.7%	November	60	10.1%
May	52	8.7%	December	46	7.7%
June	50	8.4%	Sum	596	100.0%
July	24	4.0%			

Types of Offenses

Criminal	583	97.8%
Status	6	1.0%
Unknown	4	0.7%
Non-Offense	3	0.5%
Sum	596	100.0%

Area of Detention

Secure Cell/Room	581	97.5%
Non Secure Area	15	2.5%
Sum	596	100.0%

Race

White	488	81.9%
Black	61	10.2%
Hispanic	35	5.9%
Asian/Pacific Island	10	1.7%
Not Reported	2	0.3%
Sum	596	100.0%

Count of Sex

F	305	51.17%
M	291	48.83%
Sum	596	100.00%

Juvenile Detentions-

Drug Offenses

Poss Marijuana	4	36.4%
Sum	4	36.4%

Larceny Offenses

Poss/Rec stolen Goods	1	9.1%
Sum	1	9.1%

MV Offenses

Driving w/o License	2	18.2%
Driving w/ Suspended License	1	9.1%
Sum	3	27.3%

Unknown

No Charge	1	9.1%
Sum	1	9.1%

Various Disorderly Behaviors

Disorderly Conduct	1	9.1%
Arson - 6th Degree	1	9.1%
Sum	2	18.2%

West Greenwich

Beginning Date: 1/1/2007

Ending Date: 12/31/2007

Offenses Summary

Drug Offenses	4	36.4%
MV Offenses	3	27.3%
Various Disorderly Behaviors	2	18.2%
Unknown	1	9.1%
Larceny Offenses	1	9.1%
Sum	11	100.0%

Ages

15	2	18.2%
16	5	45.5%
17	4	36.4%
Sum	11	100.0%

Time Information

12 PM	1	9.1%
2 PM	2	18.2%
5 PM	1	9.1%
7 PM	4	36.4%
9 PM	1	9.1%
10 PM	1	9.1%
11 PM	1	9.1%
Sum	11	100.0%

Month Information

January	2	18.2%	December	1	9.1%
February	1	9.1%	Sum	11	100.0%
March	1	9.1%			
April	2	18.2%			
May	1	9.1%			
June	2	18.2%			
July	1	9.1%			

Types of Offenses

Criminal	10	90.9%
Unknown	1	9.1%
Sum	11	100.0%

Area of Detention

Non Secure Area	11	100.0%
Sum	11	100.0%

Race

White	11	100.0%
Sum	11	100.0%

Count of Sex

M	6	54.55%
F	5	45.45%
Sum	11	100.00%

Juvenile Detentions-

Assault Offenses

Simple Assault	11	10.6%
Felony Assault	2	1.9%
Assault w/Dang Weapon	1	1.0%
Sum	14	13.5%

Court Violations/Warrants

Warrant/Fugitive	3	2.9%
Sum	3	2.9%

Drug Offenses

Poss Marijuana	4	3.8%
Poss unspecified narcotics	1	1.0%
Sum	5	4.8%

Larceny Offenses

Breaking & Entry	7	6.7%
Attempted B&E	4	3.8%
Poss/Rec stolen Goods	1	1.0%
Shoplifting	1	1.0%
Sum	13	12.5%

MV Offenses

Driving w/o License	2	1.9%
Sum	2	1.9%

Various Disorderly Behaviors

Disorderly Conduct	48	46.2%
Trespassing	6	5.8%
Vandalism	4	3.8%
Malicious damage	3	2.9%
Obstructing Police	2	1.9%
False Fire Alarm	1	1.0%
Sum	64	61.5%

Weapons Offenses

Discharging a firearm	2	1.9%
Poss Firearm	1	1.0%
Sum	3	2.9%

Offenses Summary

Various Disorderly Behaviors	64	61.5%
Assault Offenses	14	13.5%
Larceny Offenses	13	12.5%
Drug Offenses	5	4.8%
Weapons Offenses	3	2.9%
Court Violations/Warrants	3	2.9%
MV Offenses	2	1.9%
Sum	104	100.0%

Ages

11	3	2.9%
12	8	7.7%
13	11	10.6%
14	24	23.1%
15	18	17.3%
16	24	23.1%
17	16	15.4%
Sum	104	100.0%

Time Information

1 AM	2	1.9%	6 PM	8	7.7%
2 AM	3	2.9%	7 PM	7	6.7%
3 AM	1	1.0%	8 PM	4	3.8%
7 AM	4	3.8%	9 PM	10	9.6%
9 AM	9	8.7%	10 PM	2	1.9%
10 AM	7	6.7%	11 PM	1	1.0%
11 AM	4	3.8%	Sum	104	100.0%
12 PM	11	10.6%			
1 PM	8	7.7%			
2 PM	10	9.6%			
3 PM	1	1.0%			
4 PM	7	6.7%			
5 PM	5	4.8%			

Month Information

January	3	2.9%	September	17	16.3%
February	2	1.9%	October	19	18.3%
March	2	1.9%	November	20	19.2%
April	3	2.9%	December	15	14.4%
May	2	1.9%	Sum	104	100.0%
June	6	5.8%			
August	15	14.4%			

Types of Offenses

Criminal	104	100.0%
Sum	104	100.0%

Area of Detention

Non Secure Area	67	64.4%
Secure Cell/Room	37	35.6%
Sum	104	100.0%

Race

White	96	92.3%
Black	8	7.7%
Sum	104	100.0%

Count of Sex

M	82	78.85%
F	22	21.15%
Sum	104	100.00%

Juvenile Detentions-

Assault Offenses

Simple Assault	7	6.3%
Assault	4	3.6%
Assault w/Dang Weapon	1	0.9%
Sum	12	10.8%

Court Violations/Warrants

Warrant/Fugitive	3	2.7%
Sum	3	2.7%

Drug Offenses

Poss Marijuana	10	9.0%
Sum	10	9.0%

Larceny Offenses

Shoplifting	7	6.3%
Larceny	1	0.9%
Sum	8	7.2%

Non-Offense

Missing Person	2	1.8%
Sum	2	1.8%

Status

Violation of Curfew (location)	10	9.0%
Runaway	3	2.7%
Poss Alc/Minor	2	1.8%
Sum	15	13.5%

Unknown

No Charge	7	6.3%
Investigation	3	2.7%
W/Offender	2	1.8%
Unknown	1	0.9%
Sum	13	11.7%

Various Disorderly Behaviors

Disorderly Conduct	36	32.4%
Malicious damage	3	2.7%
Trespassing	3	2.7%
Drunkenness	2	1.8%
Vandalism	2	1.8%
Family Offenses (unknown specific)	1	0.9%
Resisting Arrest	1	0.9%
Sum	48	43.2%

Westerly

Beginning Date: 1/1/2007

Ending Date: 12/31/2007

Offenses Summary

Various Disorderly Behaviors	48	43.2%
Status	15	13.5%
Unknown	13	11.7%
Assault Offenses	12	10.8%
Drug Offenses	10	9.0%
Larceny Offenses	8	7.2%
Court Violations/Warrants	3	2.7%
Non-Offense	2	1.8%
Sum	111	100.0%

Ages

Not Reported	1	0.9%	17	25	22.5%
9	1	0.9%	Sum	111	100.0%
11	1	0.9%			
12	3	2.7%			
13	3	2.7%			
14	19	17.1%			
15	24	21.6%			
16	34	30.6%			

Time Information

12 AM	1	0.9%	4 PM	4	3.6%
1 AM	4	3.6%	5 PM	7	6.3%
3 AM	2	1.8%	6 PM	3	2.7%
4 AM	1	0.9%	7 PM	4	3.6%
7 AM	1	0.9%	8 PM	3	2.7%
8 AM	5	4.5%	9 PM	10	9.0%
9 AM	8	7.2%	10 PM	10	9.0%
10 AM	5	4.5%	11 PM	11	9.9%
11 AM	6	5.4%	Sum	111	100.0%
12 PM	6	5.4%			
1 PM	10	9.0%			
2 PM	8	7.2%			
3 PM	2	1.8%			

Month Information

January	12	10.8%	August	15	13.5%
February	9	8.1%	September	9	8.1%
March	14	12.6%	October	4	3.6%
April	7	6.3%	November	5	4.5%
May	4	3.6%	December	3	2.7%
June	11	9.9%	Sum	111	100.0%
July	18	16.2%			

Types of Offenses

Criminal	79	71.2%
Status	17	15.3%
Unknown	13	11.7%
Non-Offense	2	1.8%
Sum	111	100.0%

Area of Detention

Secure Cell/Room	62	55.9%
Non Secure Area	49	44.1%
Sum	111	100.0%

Race

White	99	89.2%
Black	6	5.4%
Native American	2	1.8%
Asian/Pacific Island	2	1.8%
Other	1	0.9%
Hispanic	1	0.9%
Sum	111	100.0%

Count of Sex

M	75	67.57%
F	36	32.43%
Sum	111	100.00%

Woonsocket

Beginning Date: 1/1/2007

Ending Date: 12/31/2007

Juvenile Detentions-

Assault Offenses

Assault	35	6.2%
Assault w/Dang Weapon	8	1.4%
Robbery	4	0.7%
Fighting	2	0.4%
Domestic Assault	2	0.4%
Felony Assault	1	0.2%
Sum	52	9.2%

Court Violations/Warrants

Warrant/Fugitive	4	0.7%
Viol of Home conf	1	0.2%
Violation of court Order	1	0.2%
Sum	6	1.1%

Drug Offenses

Poss Marijuana	18	3.2%
Poss Cocaine	4	0.7%
Sum	22	3.9%

Larceny Offenses

Shoplifting	23	4.1%
Breaking & Entry	17	3.0%
Larceny	4	0.7%
Poss Burglary Tools	1	0.2%
Poss/Rec stolen Goods	1	0.2%
Counterfeiting/Passing Counterfeit Instrument	1	0.2%
Sum	47	8.3%

MV Offenses

Poss Stol. MV	8	1.4%
Driving w/o License	7	1.2%
Tampering w/MV	3	0.5%
Motor Vehicle Charges	2	0.4%
Driving under Influence/Driving while Intoxicated	1	0.2%
Traffic Violation	1	0.2%
Driving w/ Suspended License	1	0.2%
Sum	23	4.1%

Non-Offense

Missing Person	53	9.3%
Jaywalking	1	0.2%
Sum	54	9.5%

Sex Offenses

Child Molestation/Unspecified	3	0.5%
Sum	3	0.5%

Status

Runaway	5	0.9%
Violation of Curfew (location)	5	0.9%
Poss Alc/Minor	4	0.7%
Wayward/Disobedient Child	1	0.2%
Truancy	1	0.2%
Sum	16	2.8%

Unknown

Investigation	50	8.8%
Protective Custody	26	4.6%
No Charge	6	1.1%
W/Offender	4	0.7%
Susp. Person	4	0.7%
Sum	90	15.9%

Various Disorderly Behaviors

Disorderly Conduct	150	26.5%
Vandalism	30	5.3%
Trespassing	13	2.3%
Obstructing Police	5	0.9%
Poss Fireworks	5	0.9%
Loitering	5	0.9%
Arson - 2nd degree	4	0.7%
False 911 Call	3	0.5%
Resisting Arrest	3	0.5%
Drunkenness	3	0.5%
Malicious damage	2	0.4%
Filing false report	1	0.2%
False Fire Alarm	1	0.2%
Sum	225	39.7%

Weapons Offenses

Possession Weapon/School	10	1.8%
Poss. Unspecified Weapon	8	1.4%
Poss Firearm	6	1.1%
Poss Knife	5	0.9%
Sum	29	5.1%

Woonsocket

Beginning Date: 1/1/2007

Ending Date: 12/31/2007

Offenses Summary

Various Disorderly Behaviors	225	39.7%
Unknown	90	15.9%
Non-Offense	54	9.5%
Assault Offenses	52	9.2%
Larceny Offenses	47	8.3%
Weapons Offenses	29	5.1%
MV Offenses	23	4.1%
Drug Offenses	22	3.9%
Status	16	2.8%
Court Violations/Warrants	6	1.1%
Sex Offenses	3	0.5%
Sum	567	100.0%

Ages

Not Reported	1	0.2%	13	80	14.1%
6	2	0.4%	14	107	18.9%
7	2	0.4%	15	119	21.0%
8	1	0.2%	16	102	18.0%
9	3	0.5%	17	82	14.5%
10	7	1.2%	Sum	567	100.0%
11	19	3.4%			
12	42	7.4%			

Time Information

12 AM	11	1.9%	1 PM	29	5.1%
1 AM	16	2.8%	2 PM	51	9.0%
2 AM	24	4.2%	3 PM	42	7.4%
3 AM	12	2.1%	4 PM	18	3.2%
4 AM	7	1.2%	5 PM	34	6.0%
5 AM	2	0.4%	6 PM	14	2.5%
6 AM	5	0.9%	7 PM	33	5.8%
7 AM	8	1.4%	8 PM	20	3.5%
8 AM	28	4.9%	9 PM	23	4.1%
9 AM	19	3.4%	10 PM	25	4.4%
10 AM	27	4.8%	11 PM	19	3.4%
11 AM	54	9.5%	Sum	567	100.0%
12 PM	46	8.1%			

Month Information

January	47	8.3%	August	39	6.9%
February	58	10.2%	September	38	6.7%
March	52	9.2%	October	39	6.9%
April	51	9.0%	November	45	7.9%
May	69	12.2%	December	47	8.3%
June	44	7.8%	Sum	567	100.0%
July	38	6.7%			

Types of Offenses

Criminal	404	71.3%
Unknown	90	15.9%
Non-Offense	54	9.5%
Status	19	3.4%
Sum	567	100.0%

Area of Detention

Non Secure Area	322	56.8%
Secure Cell/Room	245	43.2%
Sum	567	100.0%

Race

White	337	59.4%
Black	111	19.6%
Hispanic	92	16.2%
Asian/Pacific Island	25	4.4%
Other	1	0.2%
Not Reported	1	0.2%
Sum	567	100.0%

Count of Sex

M	360	63.49%
F	207	36.51%
Sum	567	100.0%

Section 4

2000 Census Under 18 Population Statistics

Rhode Island 2000 Under 18 Population

City/Town	Population Under 18 Years
Barrington	4745
Bristol	4399
Burrillville	4043
Central Falls	5531
Charlestown	1712
Coventry	8389
Cranston	17098
Cumberland	7690
East Greenwich	3564
East Providence	10546
Exeter	1589
Foster	1105
Glocester	2664
Hopkinton	2011
Jamestown	1238
Johnston	5906
Lincoln	5157
Little Compton	780
Middletown	4328
Narragansett	2833
New Shoreham	185
Newport	5199
North Kingstown	6848
North Providence	5936
North Smithfield	2379
Pawtucket	18151
Portsmouth	4329
Providence	45277
Richmond	2014
Scituate	2635
Smithfield	4019
South Kingstown	6284
Tiverton	3367
Warren	2454
Warwick	18780
West Greenwich	1444
West Warwick	6632
Westerly	5406
Woonsocket	11155

Source: US Bureau of the Census

Section 5

Appendix


Appendix

This Juvenile Detention Data Reporting Form is now available on the RI Justice Commission website under Juvenile Justice – Police Guides and Forms.
www.rijustice.state.ri.us/juvenile/index.htm

Please return this form on a monthly basis to: RI Justice Commission, One Capitol Hill, Providence, RI 02908, Fax: 222-1294, Attn: Gina Tocco

Juvenile Detention Data Summary

Page ___ of ___ Reporting Agency _____ Month _____ Year _____

Ref. No.	Demographic Data				Specific Reason for Detention			Area of Detention		Length of Detention			Juvenile was Sighted & Sound Separated from Adults?		
	Age	Sex	Race Designation W - White B - Black A - Asian			List Most Serious Offense C - Criminal (A felony or misdemeanor) S - Status (Non-criminal offense if adult) N - Non-offense (Abuse, neglect, missing)			Secure	Non Secure	Date Entered Detention	Time (military)	Date Released/Transferred	Time (military)	Yes
1															
2															
3															
4															
5															
6															
7															
8															
9															
10															
11															
12															
13															
14															
15															
16															
17															
18															
19															
20															
Totals:															
															
W - White B - Black A - Asian															
H - Hispanic N - Native American O - Other															
Totals:															
C - Criminal (A felony or misdemeanor) S - Status (Non-criminal offense if adult) N - Non-offense (Abuse, neglect, missing)															
Violation Zone Warning: Status & non-offenders cannot be held securely! Two boxes checked on one line in shaded area indicates a "Jail Removal" violation of JJDP Act.															
# of Juveniles held securely in excess of 6 hours															
Sight/Sound: Answer Yes or No for each juvenile (No = violation)															

Collection of data is mandated by U.S. Dept. of Justice Statutory Regulations & R.I. General Laws - 42-26-4(1), 42-26-9(6), & 42-26-11

**The publication of this report is supported
by Grant Number 2007-JFFX-0027 awarded by
the Office of Juvenile Justice and Delinquency Prevention
and by Grant Number 2007-BJ-CX-K007
awarded by the Bureau of Justice Statistics of the
Office of Justice Programs, US Department of Justice.**

**Permission to reproduce or transmit all or parts of this report
is hereby granted by the publisher,
the Rhode Island Justice Commission.
Proper acknowledgements will be appreciated.**

**Points of view expressed herein are those of the author
and do not necessarily reflect the views of the
US Attorney General or the US Department of Justice.**

The Statistical Analysis Center

of the Rhode Island Justice Commission

**One Capitol Hill
Providence, RI 02908
(401) 222-2620**

www.rijustice.state.ri.us



State of Rhode Island and Providence Plantations